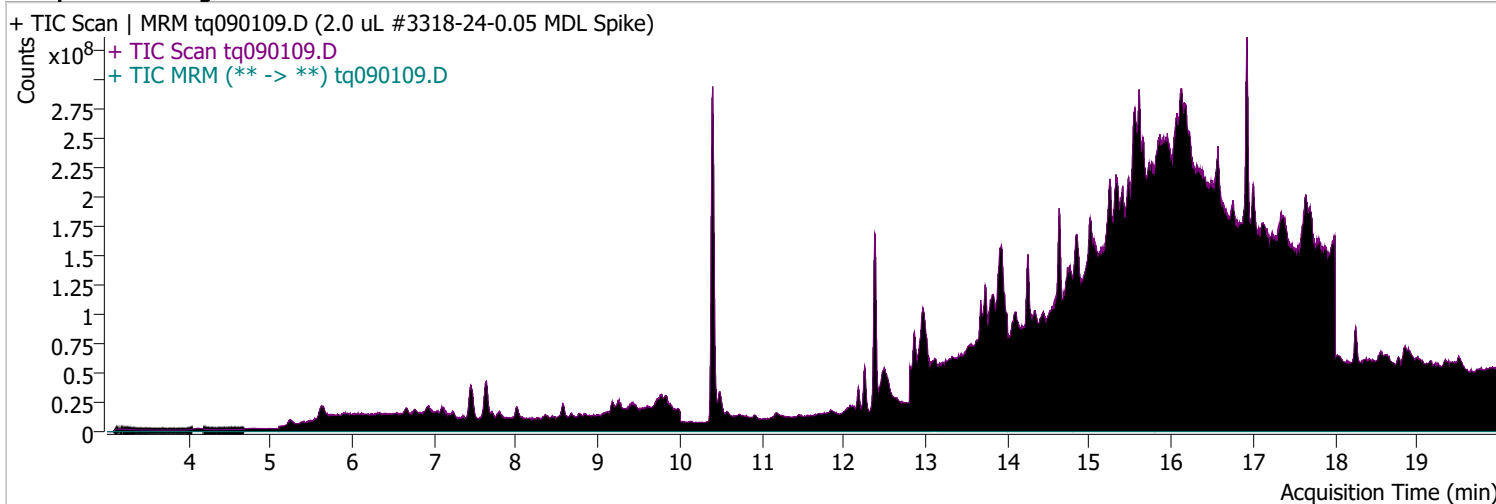


# Quantitative Analysis Sample Report

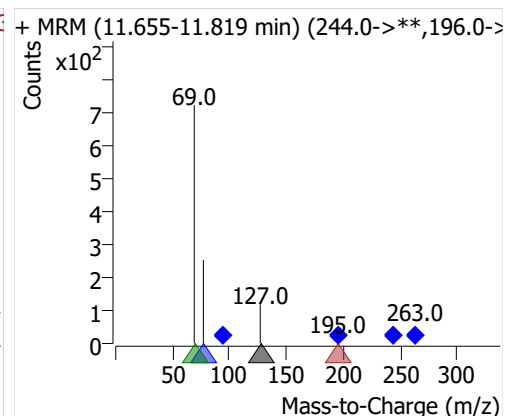
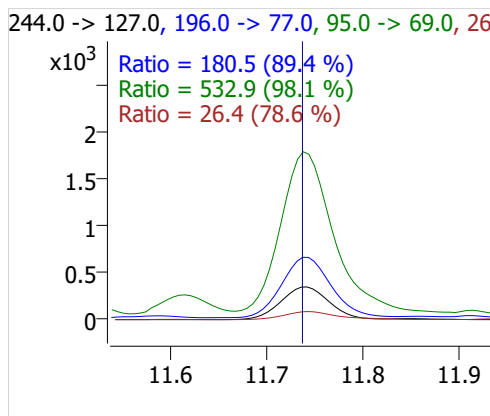
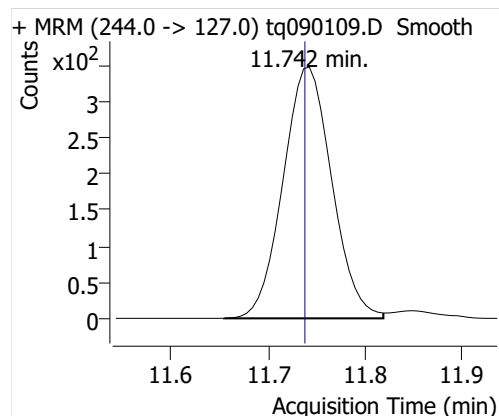
Batch Path	D:\MassHunter\GCMS\1\data\01sep22\QuantResults\mdl.batch.bin		
Analysis Time	9/22/2022 2:17 PM	Analyst Name	DESKTOP-R0LAL7E\analyst
Report Time	9/22/2022 2:19:07 PM	Reporter Name	DESKTOP-R0LAL7E\analyst
Last Calib Update	9/6/2022 9:10 AM	Batch State	Processed
Quant Batch Version	10.1	Quant Report Version	10.1
Acq. Time	9/1/2022 5:37 PM	Data File	tq090109.D
Sample Type	QC	Sample Name	2.0 uL #3318-24-0.05 MDL Spike
Dilution	1	Acq. Method	tq22m0831

## Sample Chromatogram

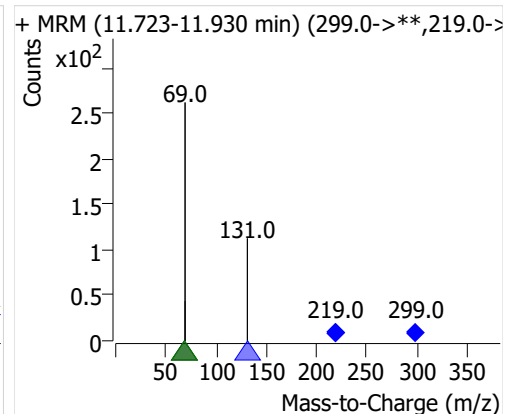
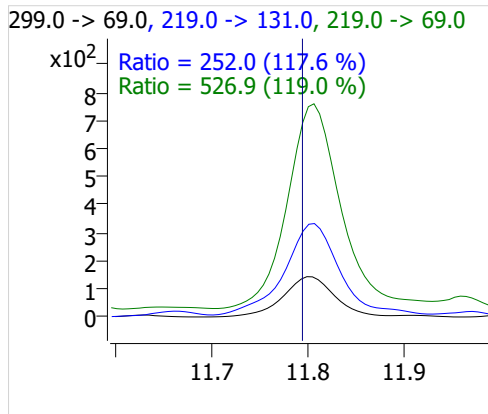
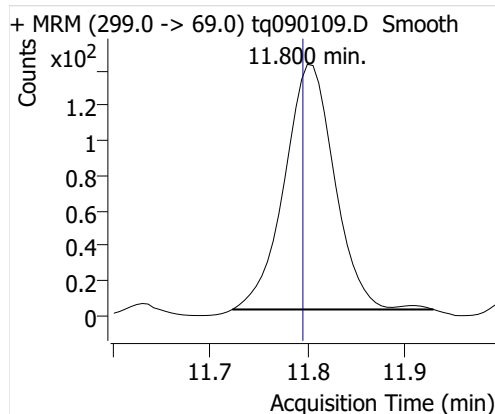


Compound	ISTD	RT	Resp.	ISTD Resp.	Resp. Ratio	Final Conc	Units
4:2 FTOH	6:2 FTOH-C13	11.742	1214	23644	0.0513	0.1234	ng
5:2sFTOH	6:2 FTOH-C13	11.800	505	23644	0.0214	0.1211	ng
7:2sFTOH	6:2 FTOH-C13	13.111	1214	23644	0.0513	0.1359	ng
6:2 FTOH	6:2 FTOH-C13	13.145	2577	23644	0.1090	0.1414	ng
8:2 FTOH-C13	6:2 FTOH-C13	14.342	7847	23644	0.3319	1.0741	ng
8:2 FTOH	6:2 FTOH-C13	14.343	706	23644	0.0299	0.1329	ng
10:2 FTOH	6:2 FTOH-C13	15.421	180	23644	0.0076	0.1011	ng
12:2 FTOH	6:2 FTOH-C13	16.396	743	23644	0.0314	0.1104	ng

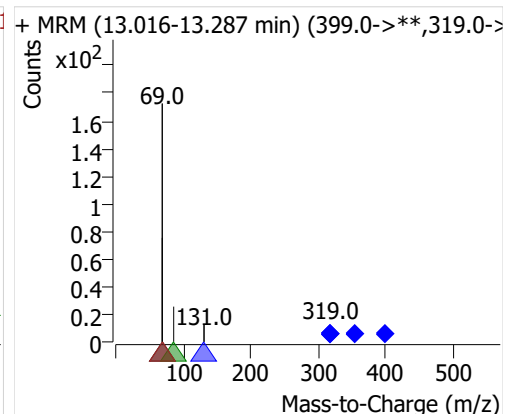
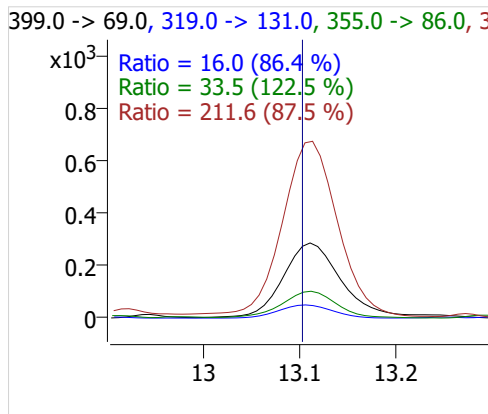
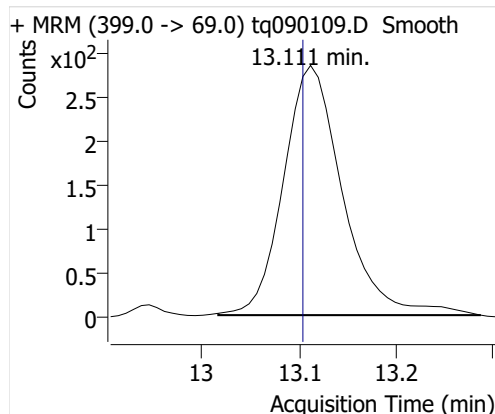
## 4:2 FTOH



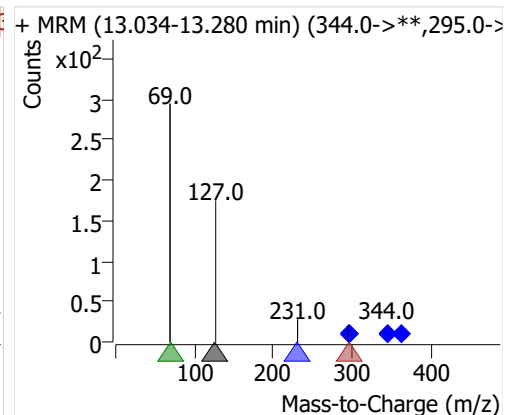
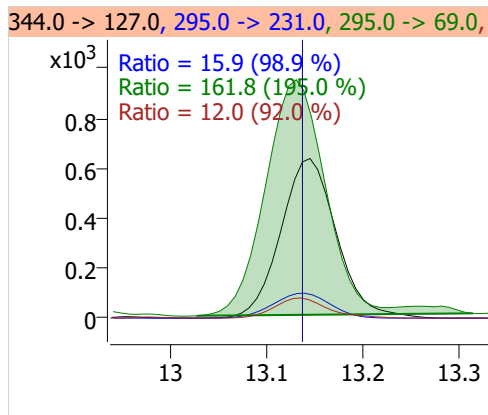
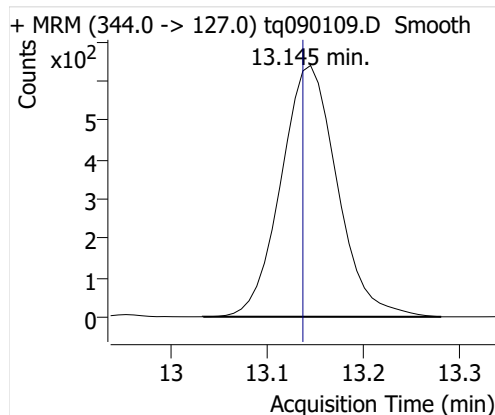
## 5:2sFTOH



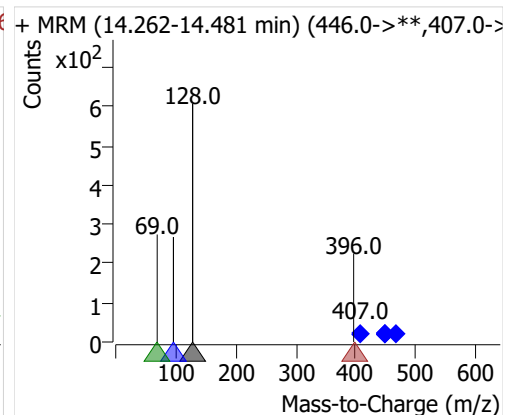
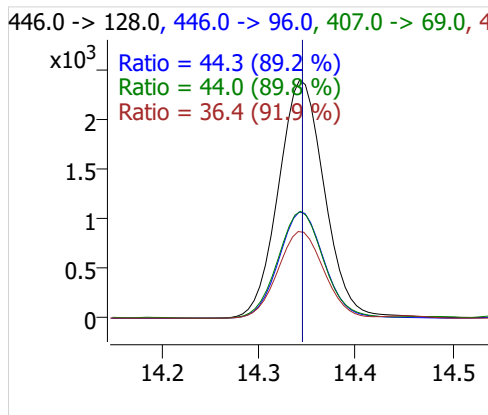
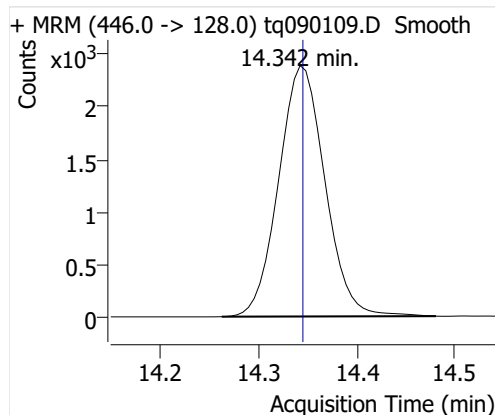
## 7:2sFTOH



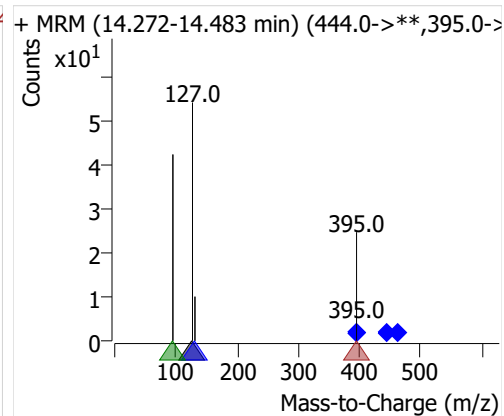
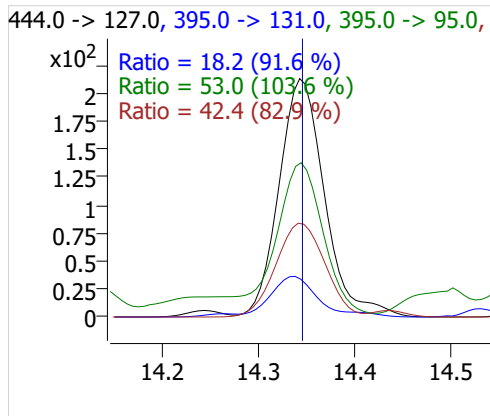
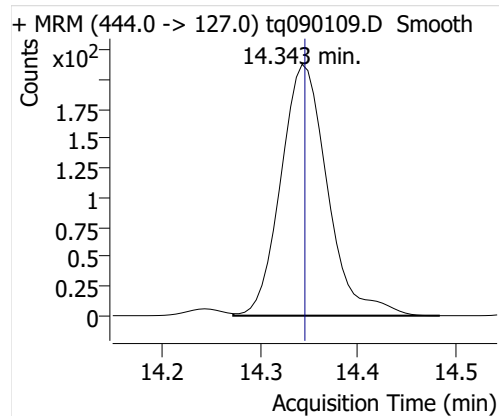
## 6:2 FTOH



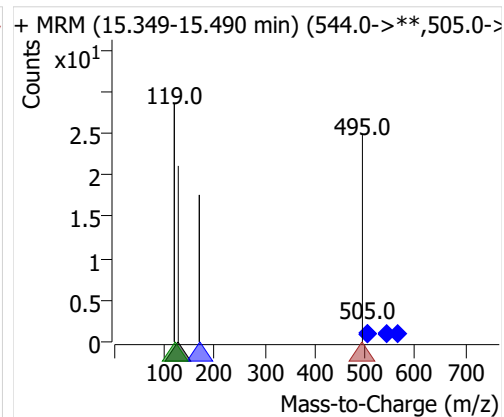
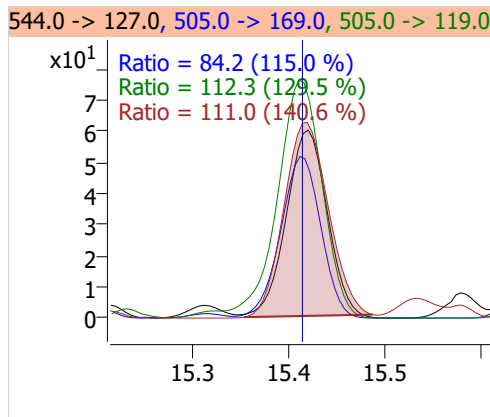
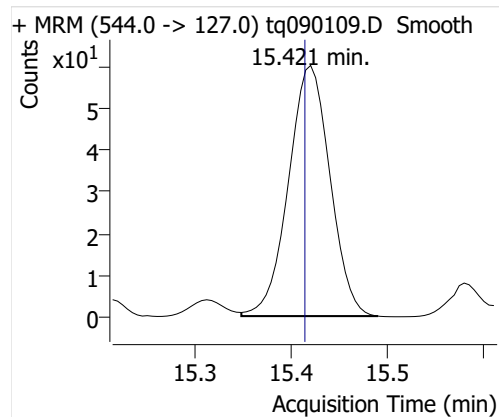
## 8:2 FTOH-C13



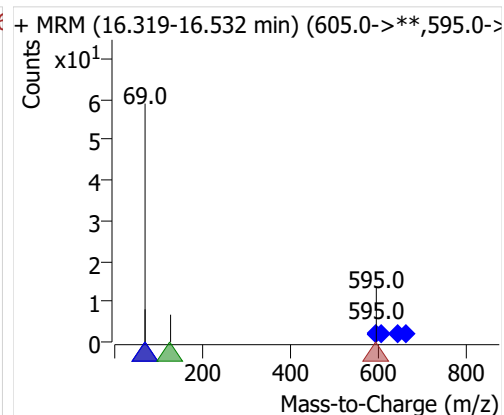
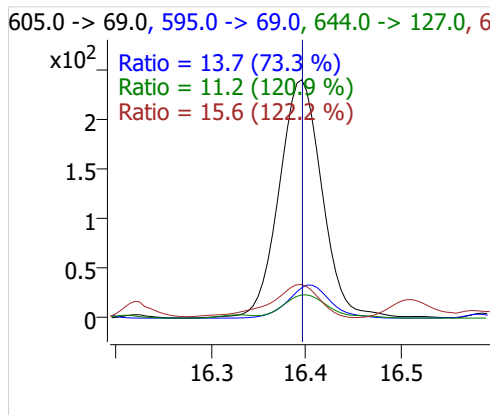
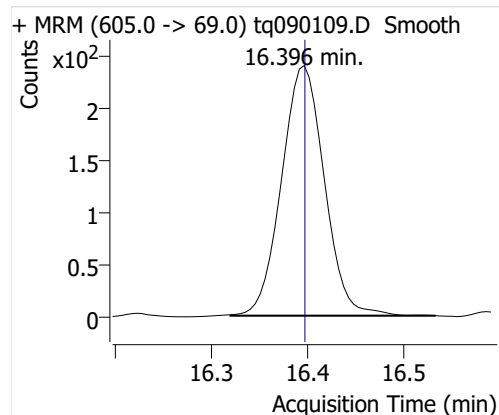
## 8:2 FTOH



## 10:2 FTOH



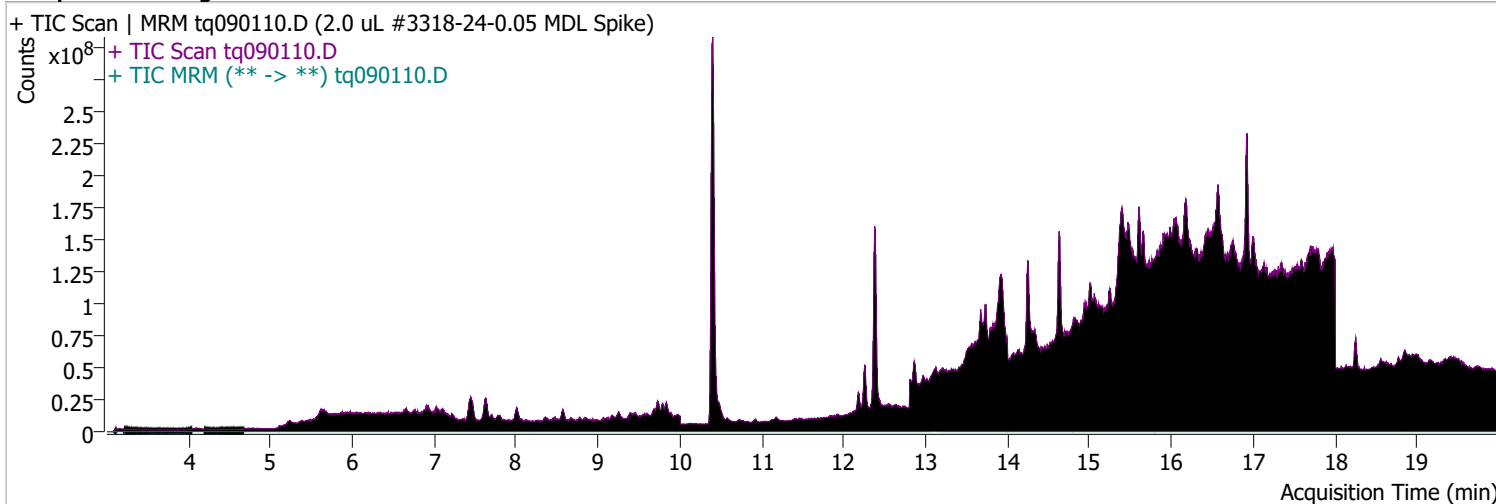
## 12:2 FTOH



# Quantitative Analysis Sample Report

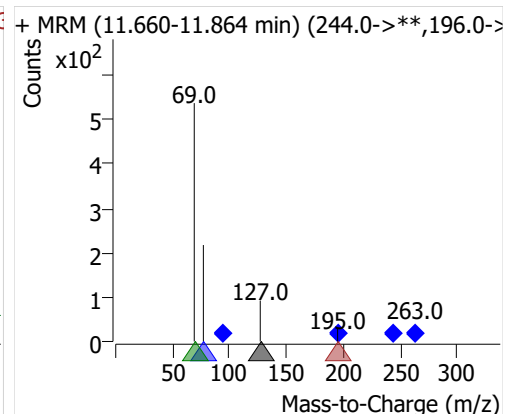
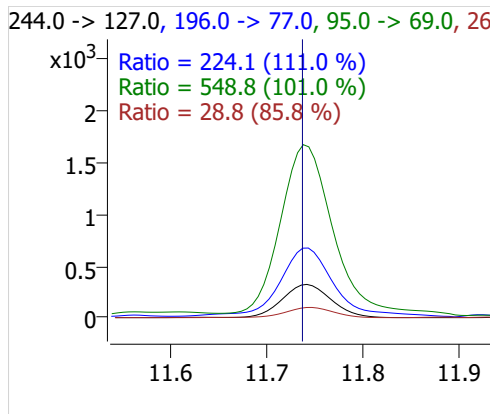
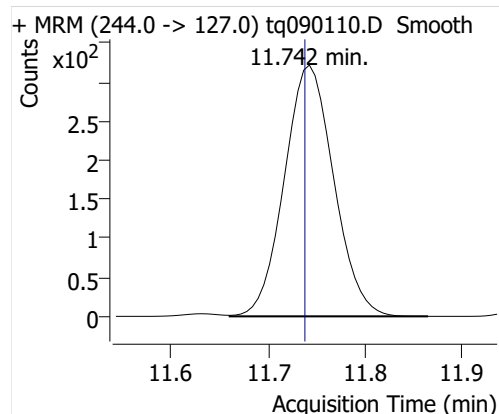
Batch Path	D:\MassHunter\GCMS\1\data\01sep22\QuantResults\mdl.batch.bin		
Analysis Time	9/22/2022 2:17 PM	Analyst Name	DESKTOP-R0LAL7E\analyst
Report Time	9/22/2022 2:19:09 PM	Reporter Name	DESKTOP-R0LAL7E\analyst
Last Calib Update	9/6/2022 9:10 AM	Batch State	Processed
Quant Batch Version	10.1	Quant Report Version	10.1
Acq. Time	9/1/2022 6:18 PM	Data File	tq090110.D
Sample Type	QC	Sample Name	2.0 uL #3318-24-0.05 MDL Spike
Dilution	1	Acq. Method	tq22m0831

## Sample Chromatogram

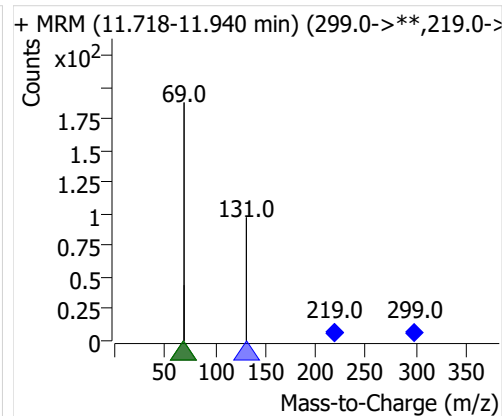
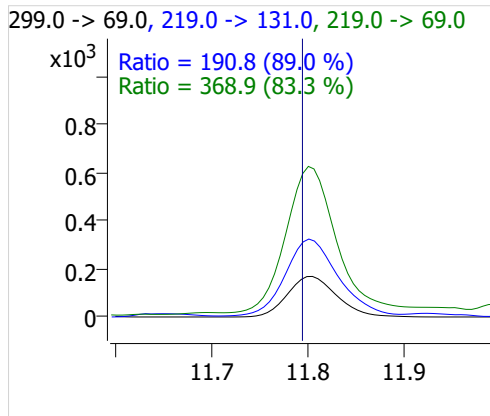
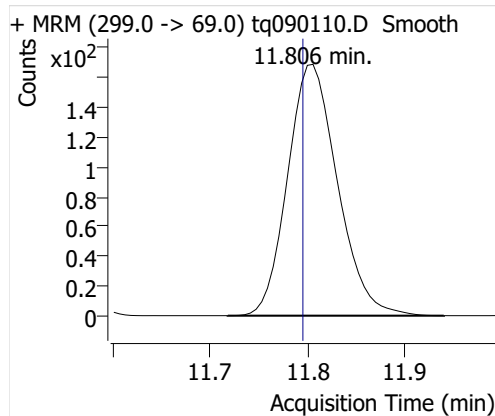


Compound	ISTD	RT	Resp.	ISTD Resp.	Resp. Ratio	Final Conc	Units
4:2 FTOH	6:2 FTOH-C13	11.742	1137	27306	0.0416	0.1000	ng
5:2sFTOH	6:2 FTOH-C13	11.806	603	27306	0.0221	0.1251	ng
7:2sFTOH	6:2 FTOH-C13	13.111	974	27306	0.0357	0.0944	ng
6:2 FTOH	6:2 FTOH-C13	13.137	2504	27306	0.0917	0.1190	ng
8:2 FTOH-C13	6:2 FTOH-C13	14.342	9079	27306	0.3325	1.0760	ng
8:2 FTOH	6:2 FTOH-C13	14.348	703	27306	0.0257	0.1145	ng
10:2 FTOH	6:2 FTOH-C13	15.416	274	27306	0.0100	0.1332	ng
12:2 FTOH	6:2 FTOH-C13	16.396	955	27306	0.0350	0.1228	ng

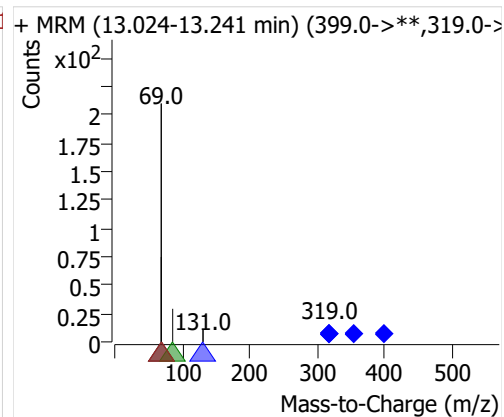
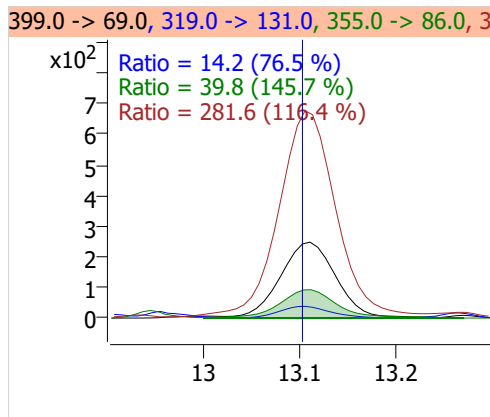
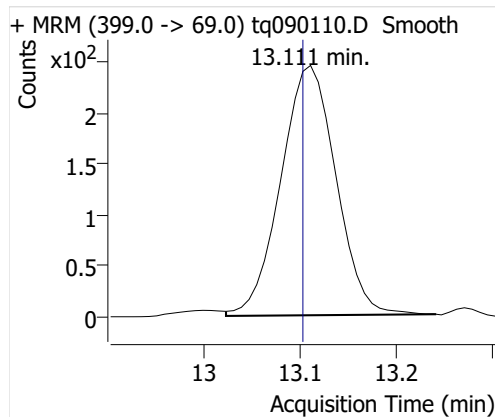
## 4:2 FTOH



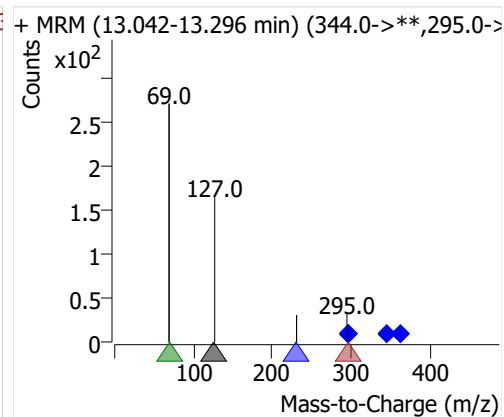
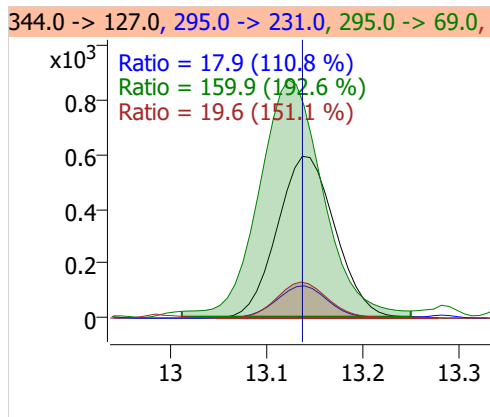
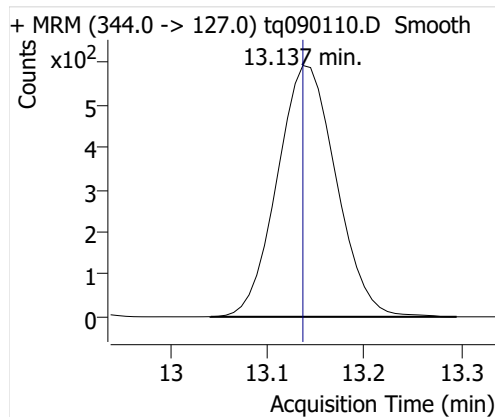
## 5:2sFTOH



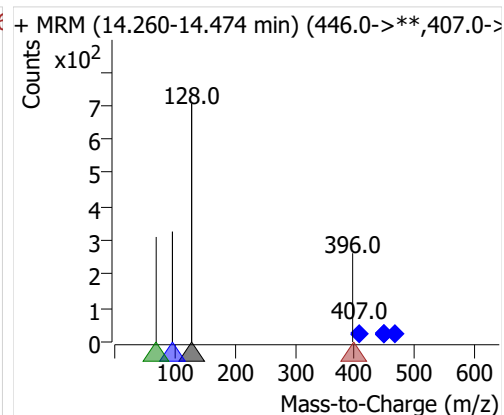
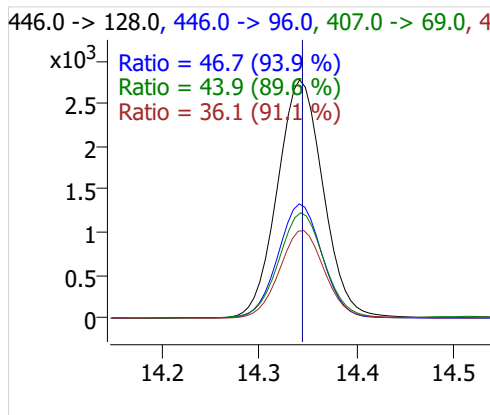
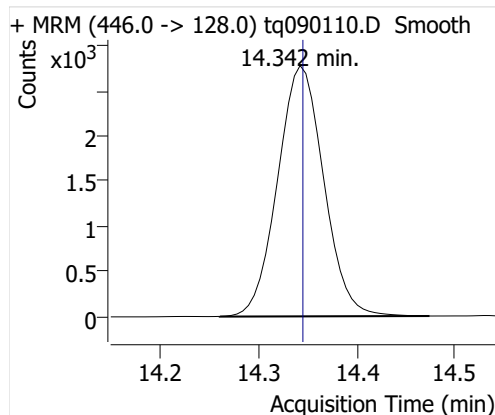
## 7:2sFTOH



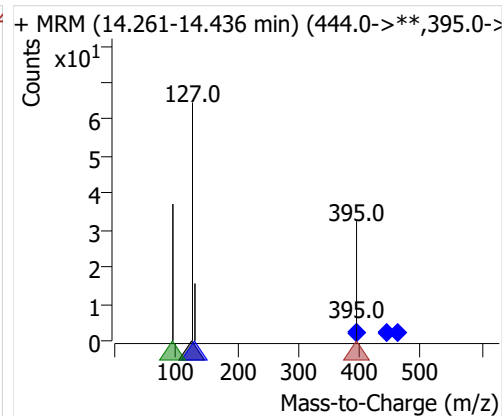
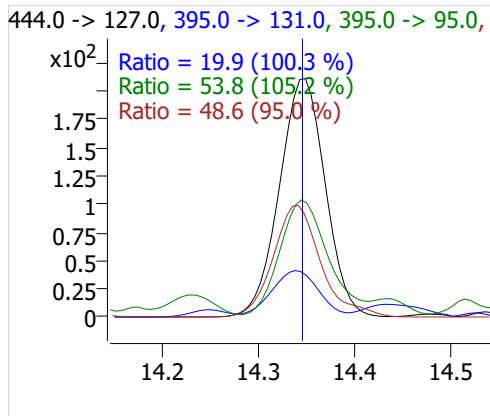
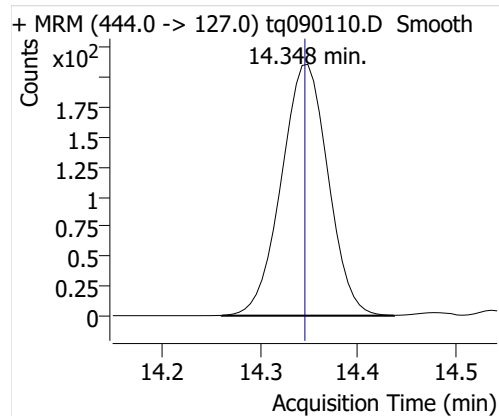
## 6:2 FTOH



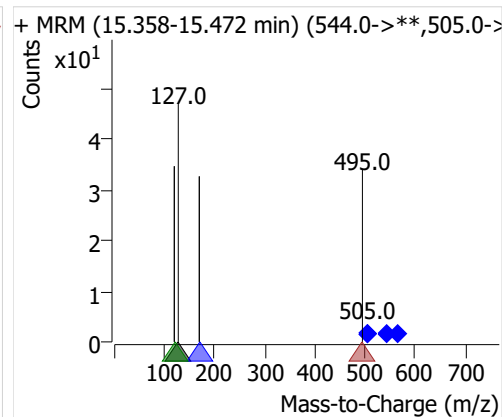
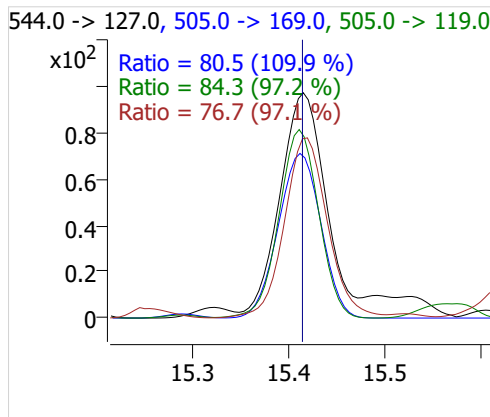
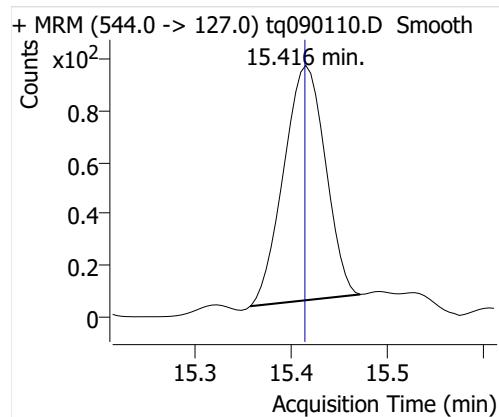
## 8:2 FTOH-C13



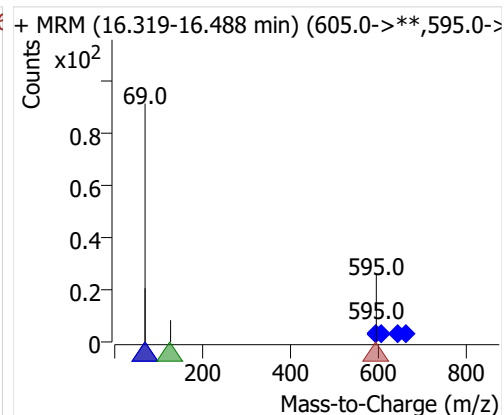
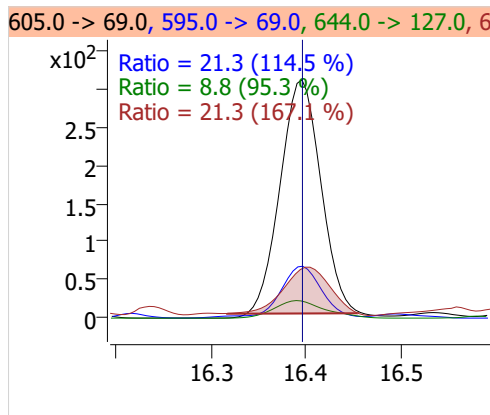
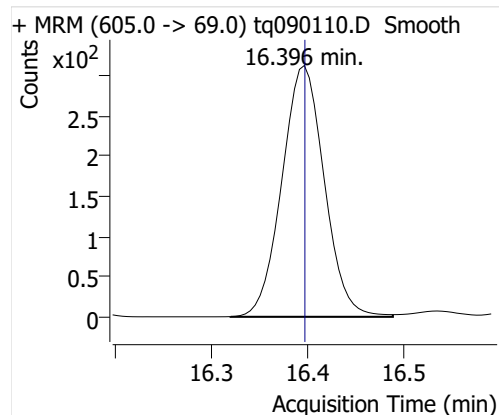
## 8:2 FTOH



## 10:2 FTOH



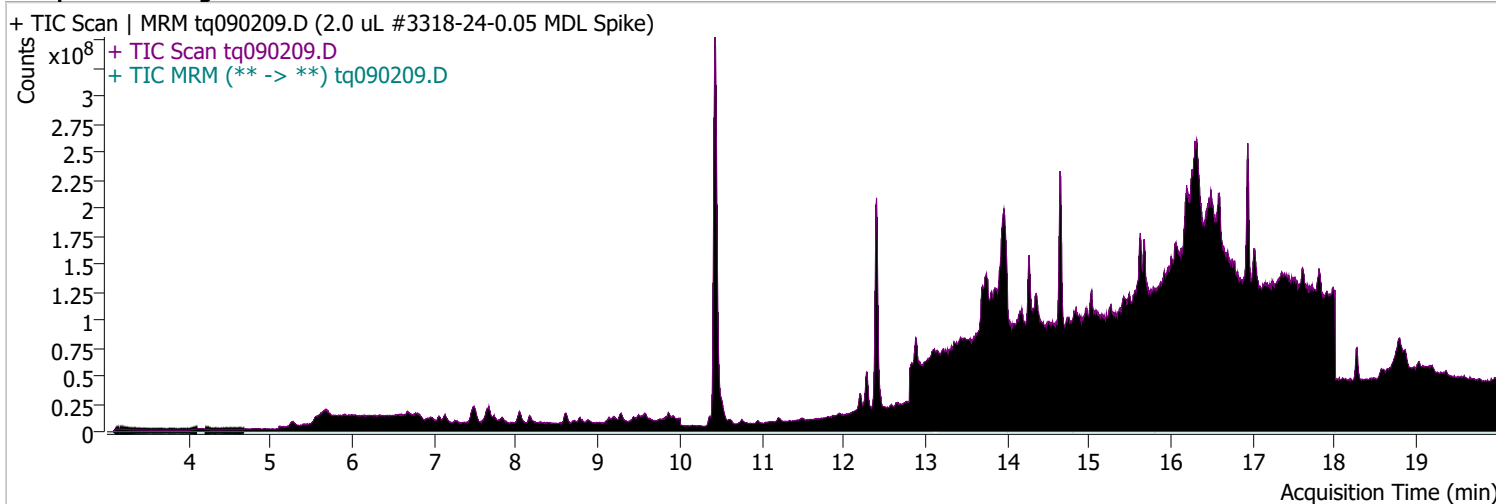
## 12:2 FTOH



# Quantitative Analysis Sample Report

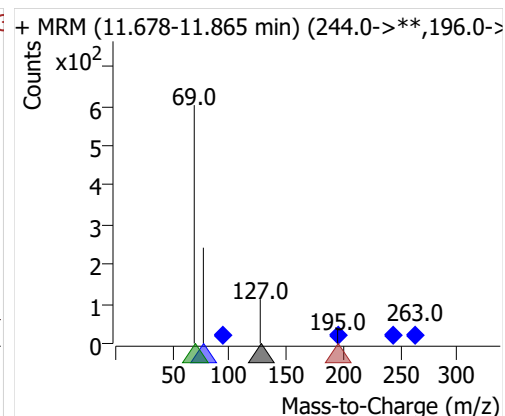
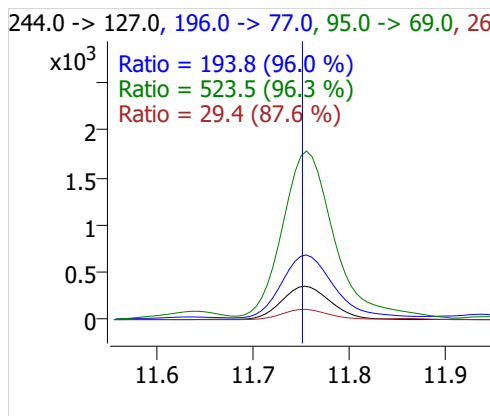
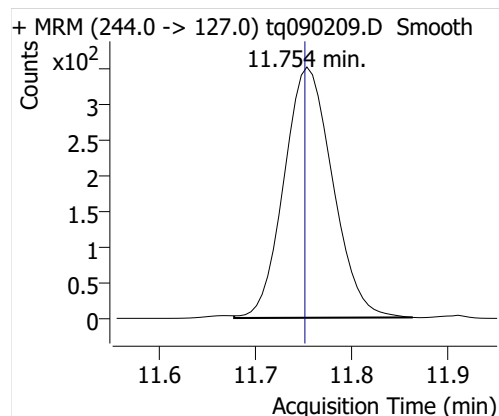
Batch Path	D:\MassHunter\GCMS\1\data\01sep22\QuantResults\mdl.batch.bin		
Analysis Time	9/22/2022 2:17 PM	Analyst Name	DESKTOP-R0LAL7E\analyst
Report Time	9/22/2022 2:19:09 PM	Reporter Name	DESKTOP-R0LAL7E\analyst
Last Calib Update	9/6/2022 9:10 AM	Batch State	Processed
Quant Batch Version	10.1	Quant Report Version	10.1
Acq. Time	9/2/2022 7:27 PM	Data File	tq090209.D
Sample Type	QC	Sample Name	2.0 uL #3318-24-0.05 MDL Spike
Dilution	1	Acq. Method	tq22m0831

## Sample Chromatogram

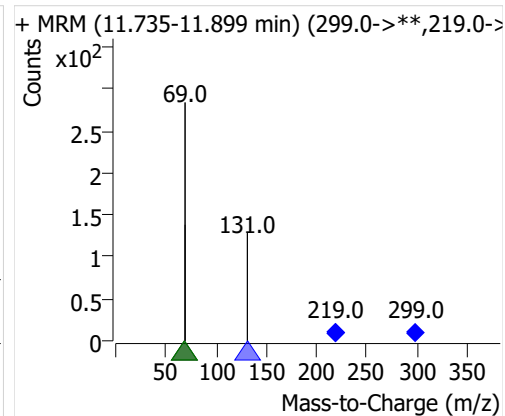
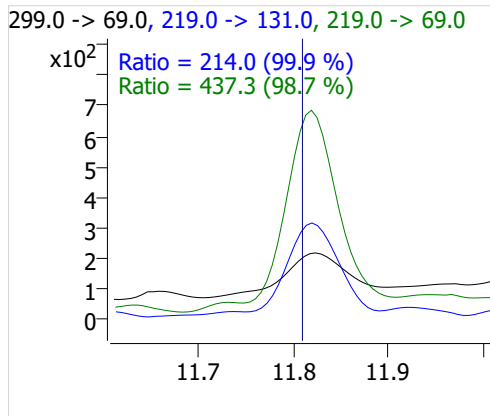
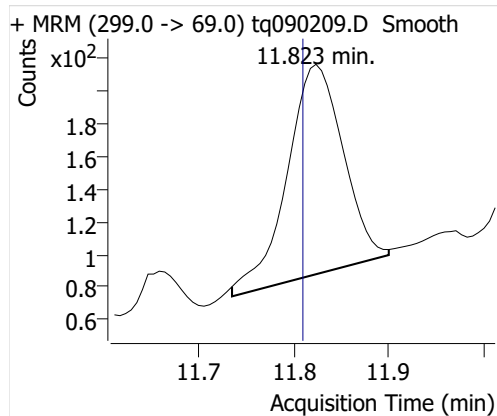


Compound	ISTD	RT	Resp.	ISTD Resp.	Resp. Ratio	Final Conc	Units
4:2 FTOH	6:2 FTOH-C13	11.754	1253	28759	0.0436	0.1047	ng
5:2sFTOH	6:2 FTOH-C13	11.823	521	28759	0.0181	0.1027	ng
7:2sFTOH	6:2 FTOH-C13	13.127	1193	28759	0.0415	0.1098	ng
6:2 FTOH	6:2 FTOH-C13	13.153	2339	28759	0.0813	0.1055	ng
8:2 FTOH-C13	6:2 FTOH-C13	14.354	8790	28759	0.3057	0.9891	ng
8:2 FTOH	6:2 FTOH-C13	14.354	673	28759	0.0234	0.1041	ng
10:2 FTOH	6:2 FTOH-C13	15.426	243	28759	0.0084	0.1123	ng
12:2 FTOH	6:2 FTOH-C13	16.406	852	28759	0.0296	0.1040	ng

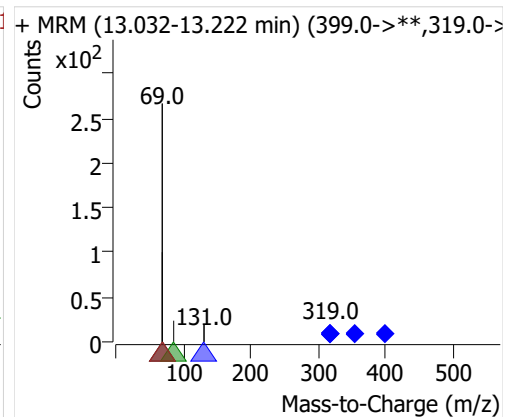
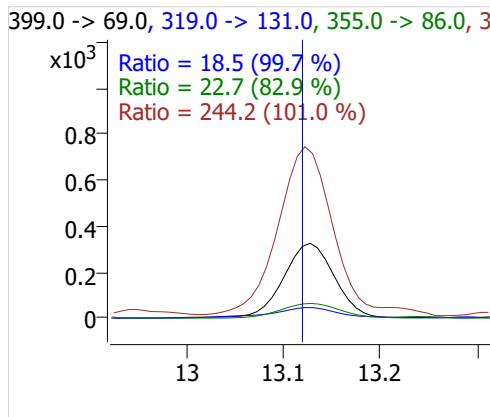
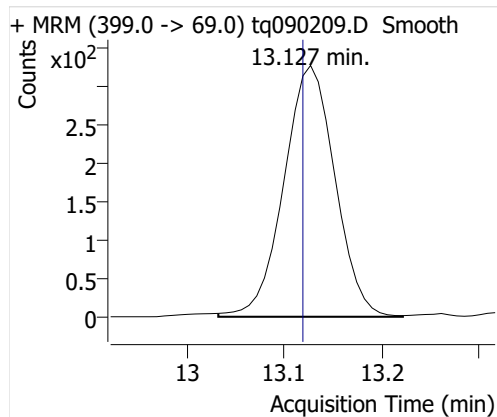
## 4:2 FTOH



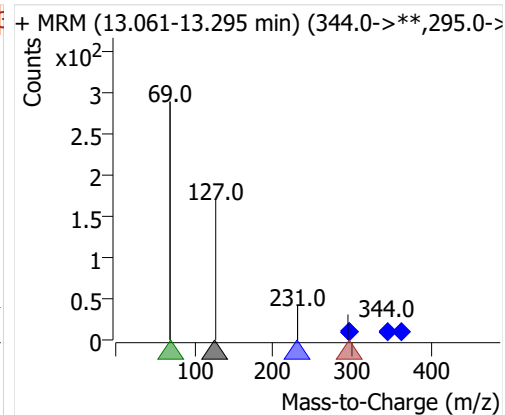
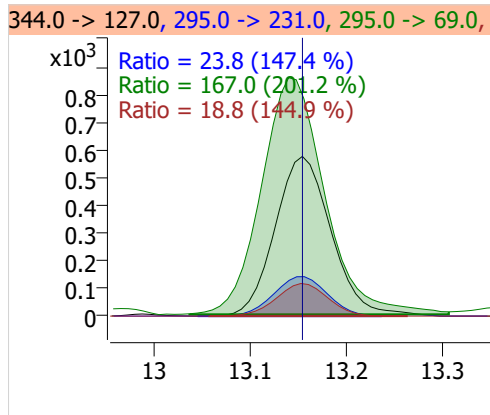
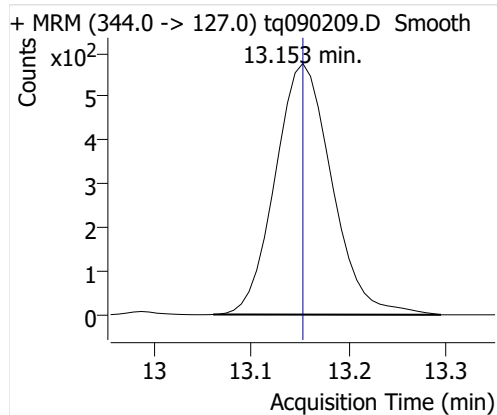
## 5:2sFTOH



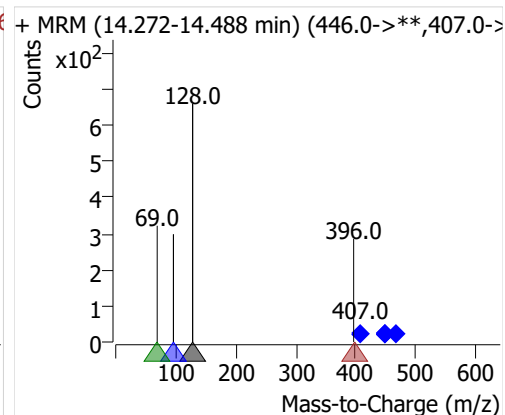
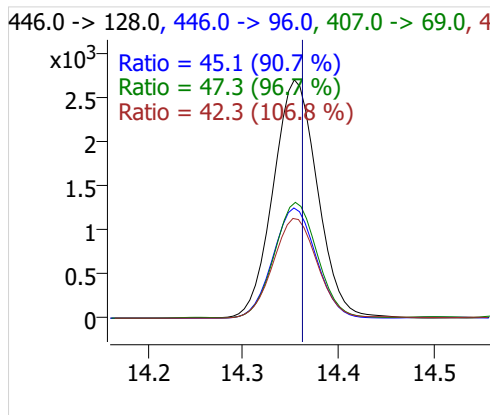
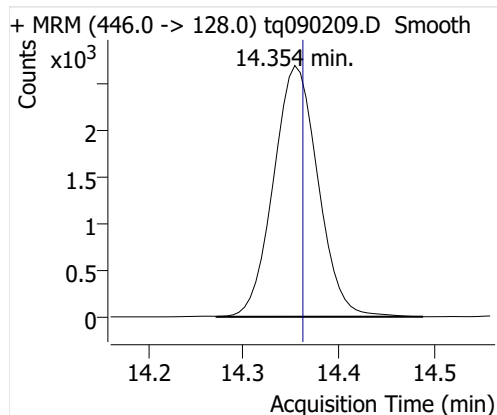
## 7:2sFTOH



## 6:2 FTOH

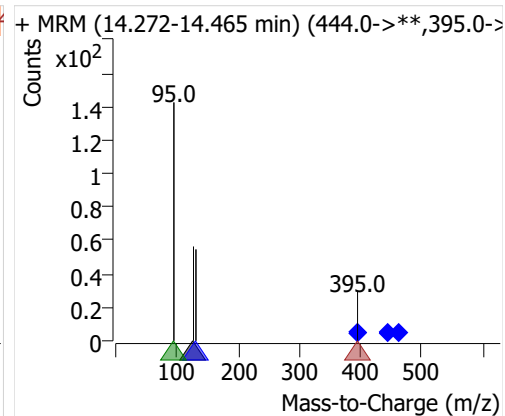
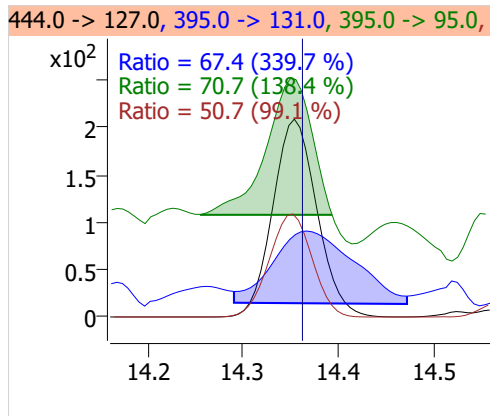
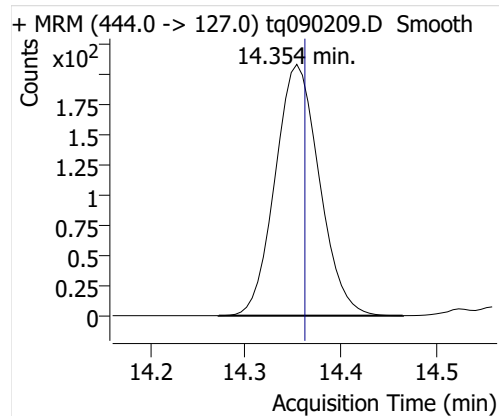


## 8:2 FTOH-C13

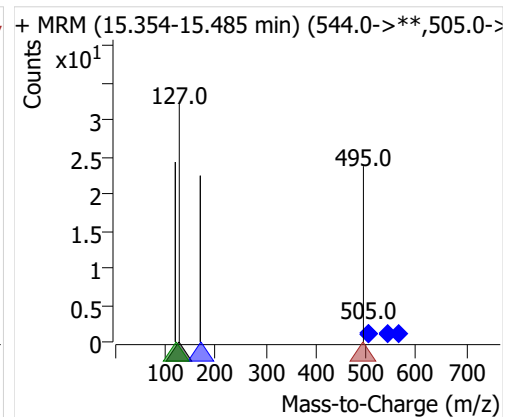
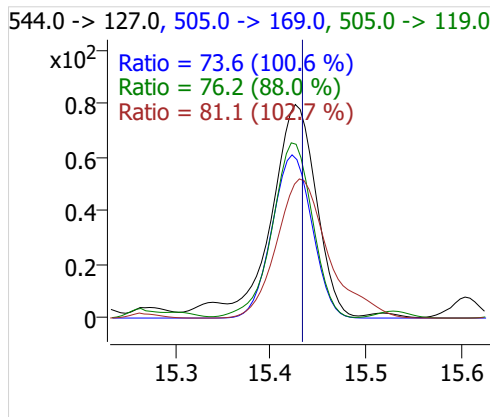
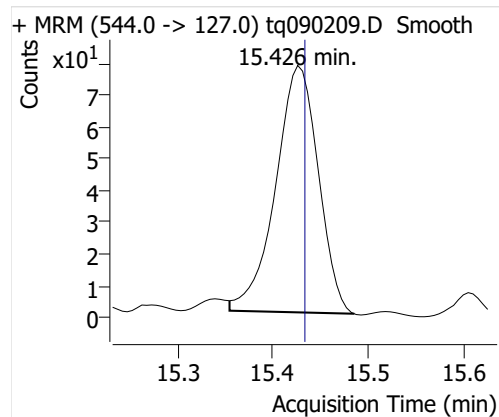




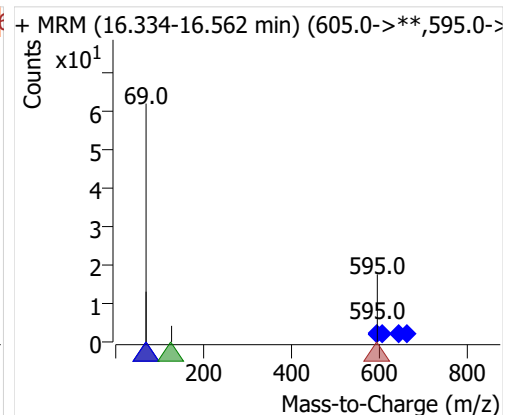
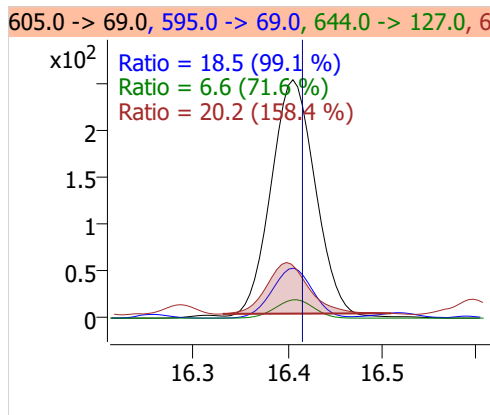
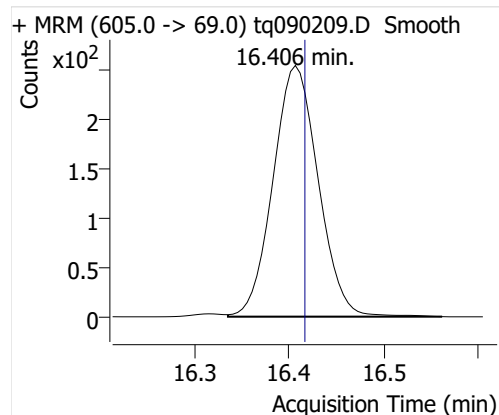
## 8:2 FTOH



## 10:2 FTOH



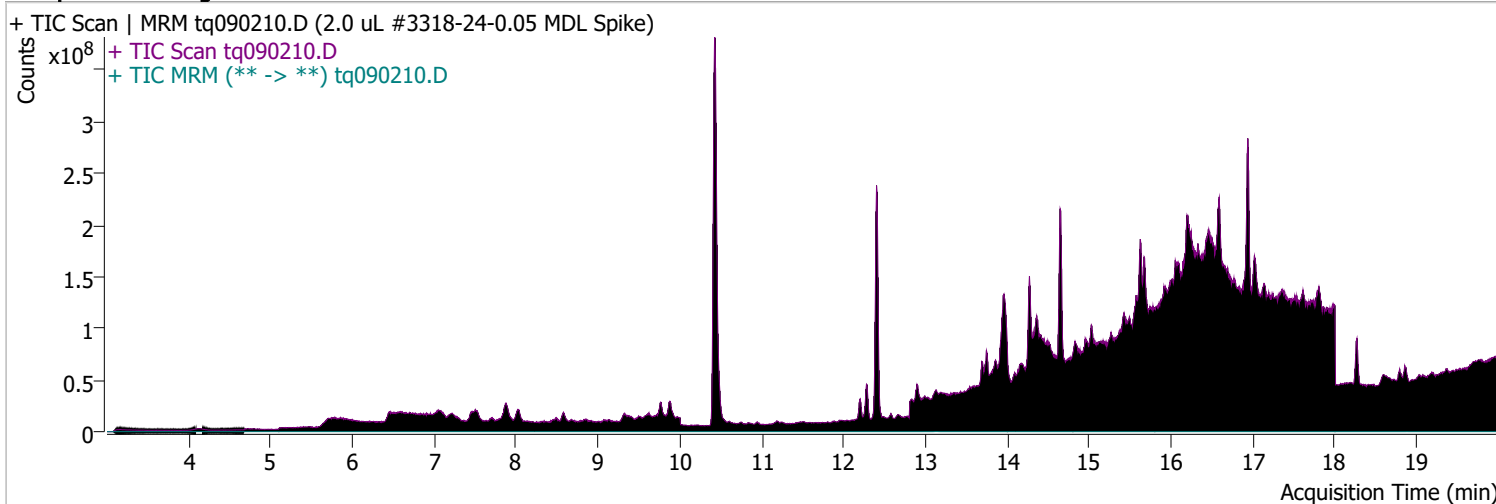
## 12:2 FTOH



# Quantitative Analysis Sample Report

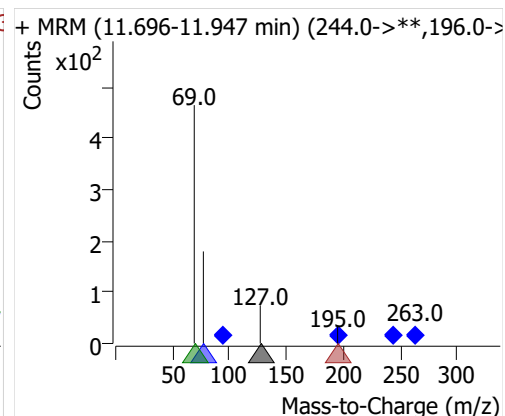
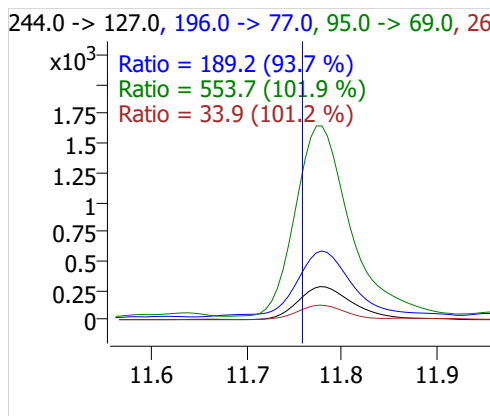
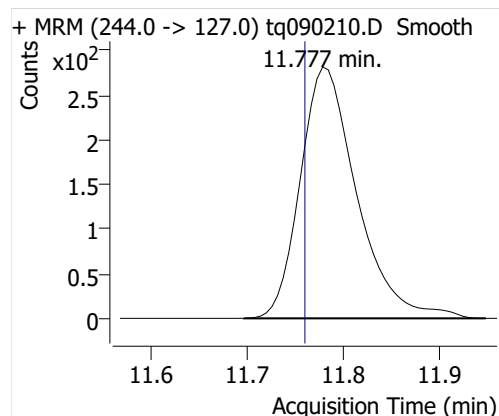
Batch Path	D:\MassHunter\GCMS\1\data\01sep22\QuantResults\mdl.batch.bin		
Analysis Time	9/22/2022 2:17 PM	Analyst Name	DESKTOP-R0LAL7E\analyst
Report Time	9/22/2022 2:19:10 PM	Reporter Name	DESKTOP-R0LAL7E\analyst
Last Calib Update	9/6/2022 9:10 AM	Batch State	Processed
Quant Batch Version	10.1	Quant Report Version	10.1
Acq. Time	9/2/2022 8:08 PM	Data File	tq090210.D
Sample Type	QC	Sample Name	2.0 uL #3318-24-0.05 MDL Spike
Dilution	1	Acq. Method	tq22m0831

## Sample Chromatogram

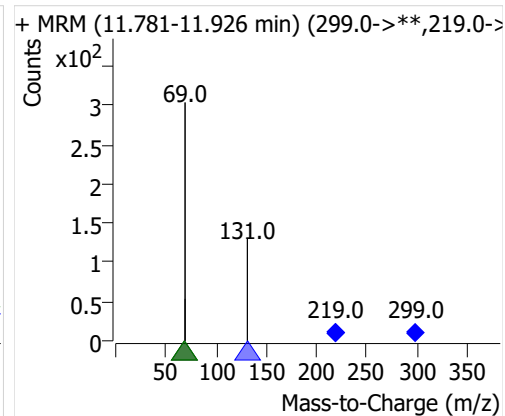
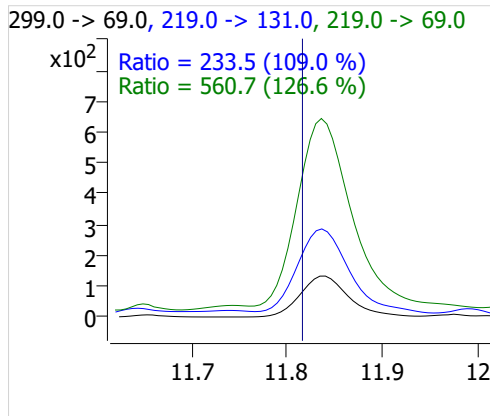
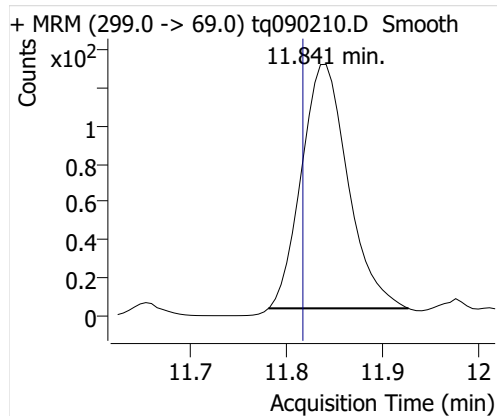


Compound	ISTD	RT	Resp.	ISTD Resp.	Resp. Ratio	Final Conc	Units
4:2 FTOH	6:2 FTOH-C13	11.777	1151	27083	0.0425	0.1021	ng
5:2sFTOH	6:2 FTOH-C13	11.841	434	27083	0.0160	0.0908	ng
7:2sFTOH	6:2 FTOH-C13	13.127	971	27083	0.0359	0.0949	ng
6:2 FTOH	6:2 FTOH-C13	13.161	2289	27083	0.0845	0.1096	ng
8:2 FTOH-C13	6:2 FTOH-C13	14.354	8696	27083	0.3211	1.0390	ng
8:2 FTOH	6:2 FTOH-C13	14.354	686	27083	0.0253	0.1127	ng
10:2 FTOH	6:2 FTOH-C13	15.426	300	27083	0.0111	0.1472	ng
12:2 FTOH	6:2 FTOH-C13	16.406	832	27083	0.0307	0.1078	ng

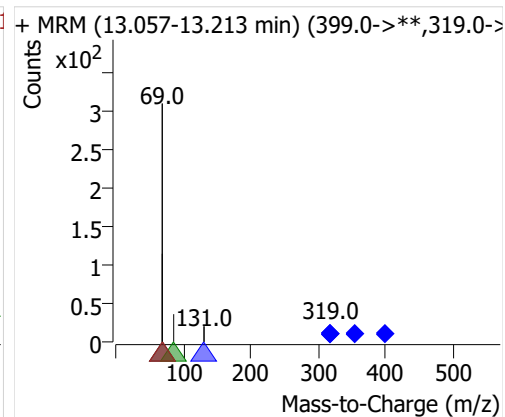
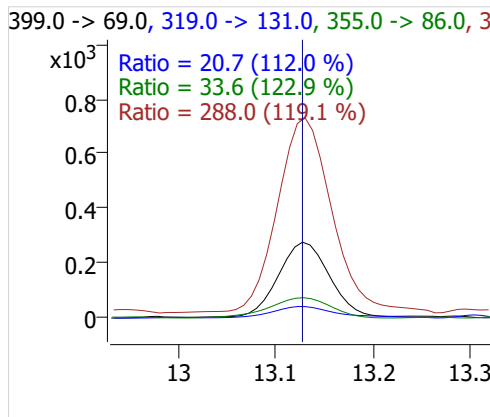
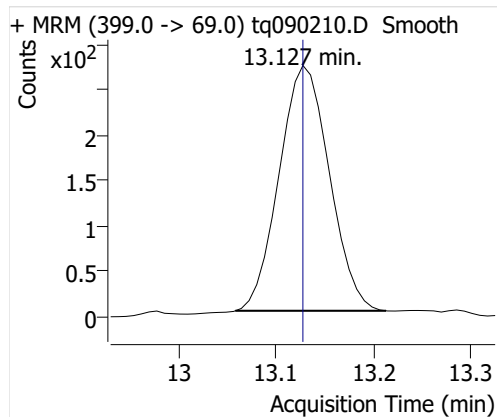
## 4:2 FTOH



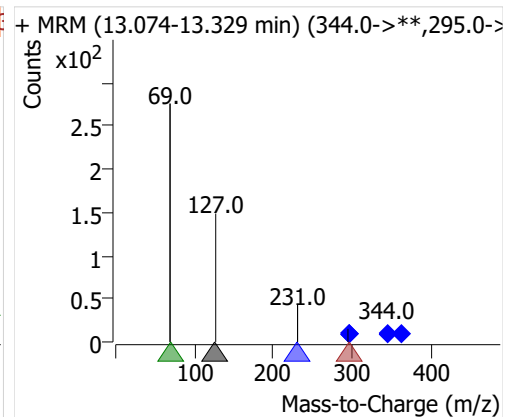
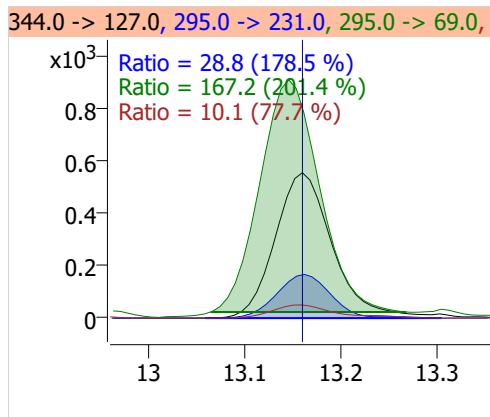
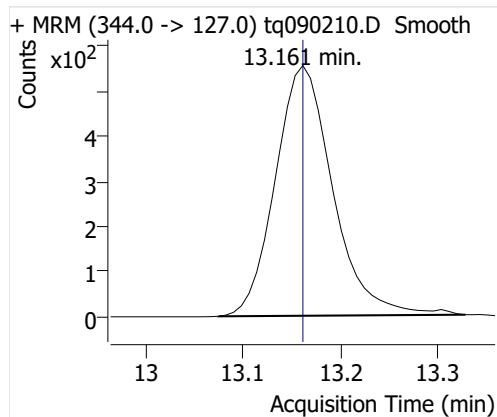
## 5:2sFTOH



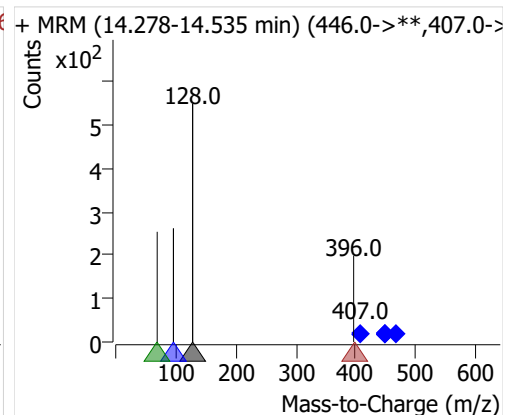
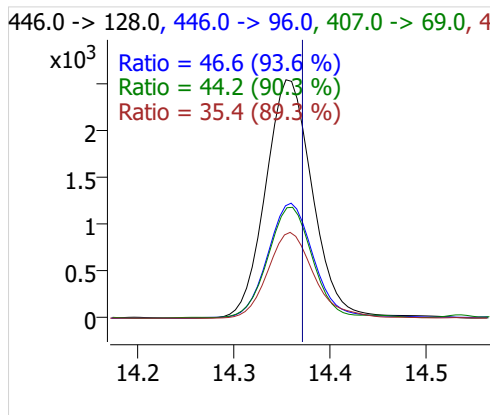
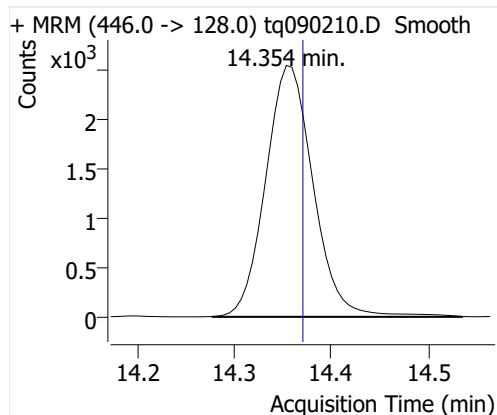
## 7:2sFTOH



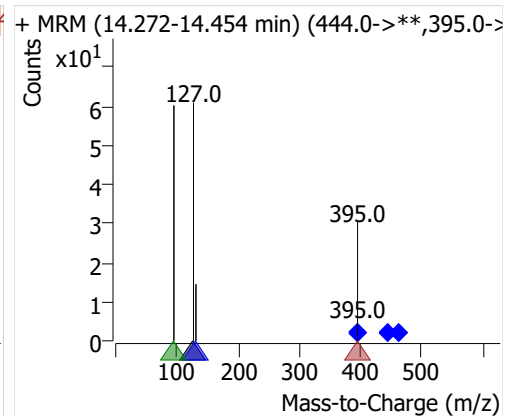
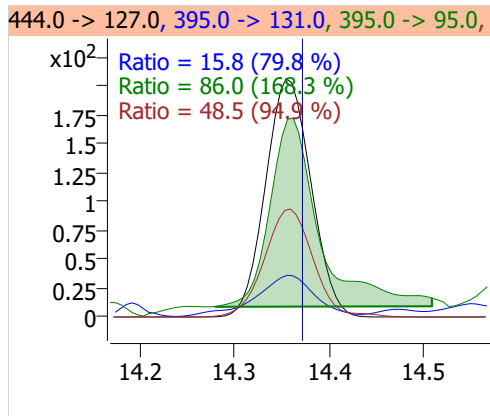
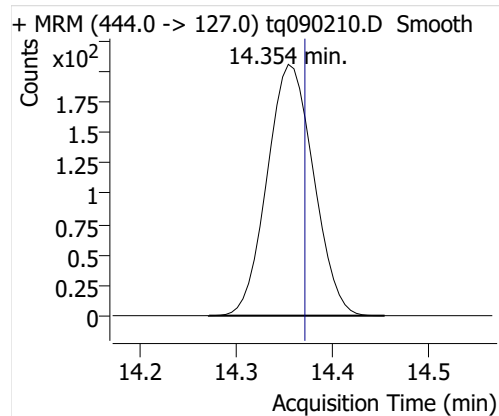
## 6:2 FTOH



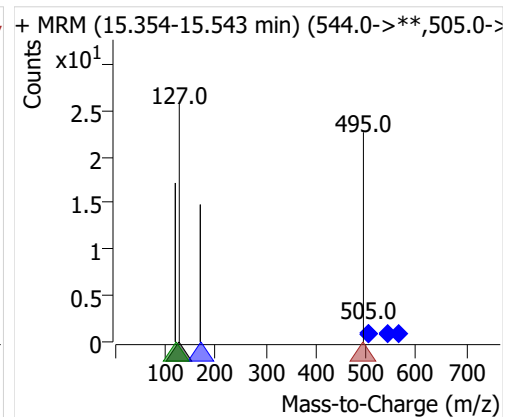
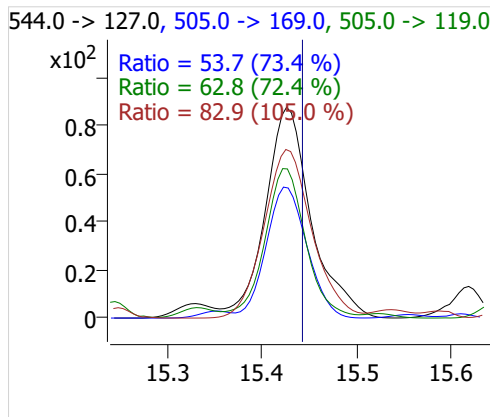
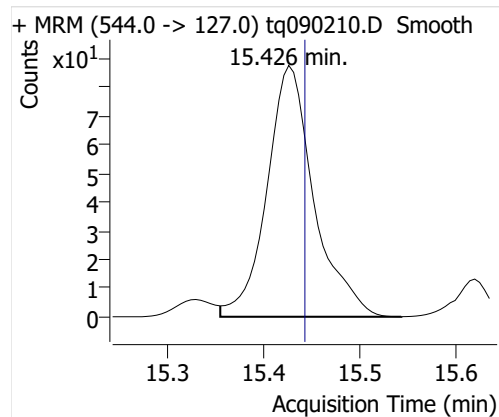
## 8:2 FTOH-C13



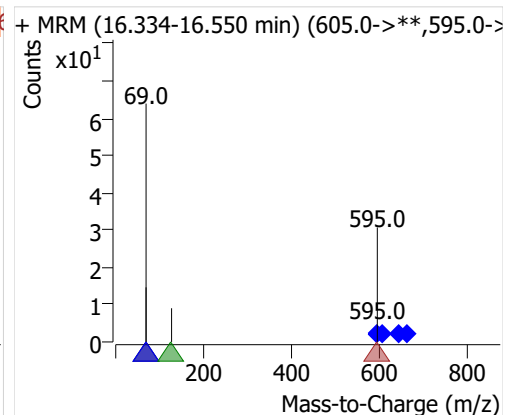
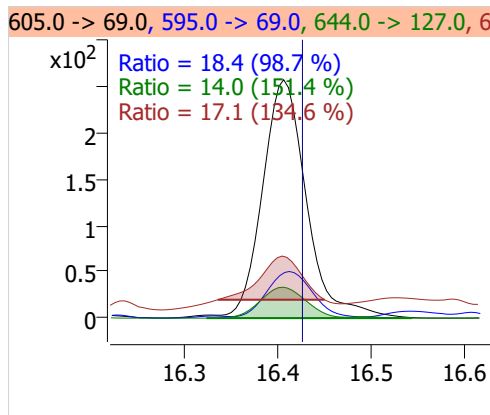
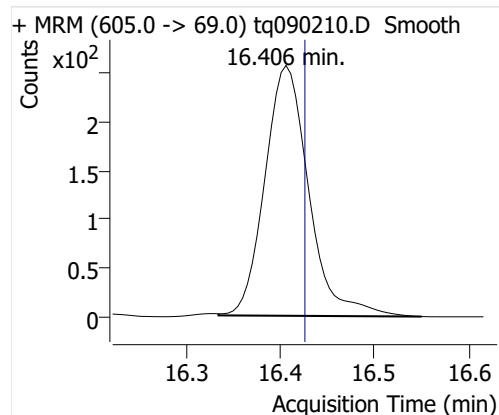
## 8:2 FTOH



## 10:2 FTOH



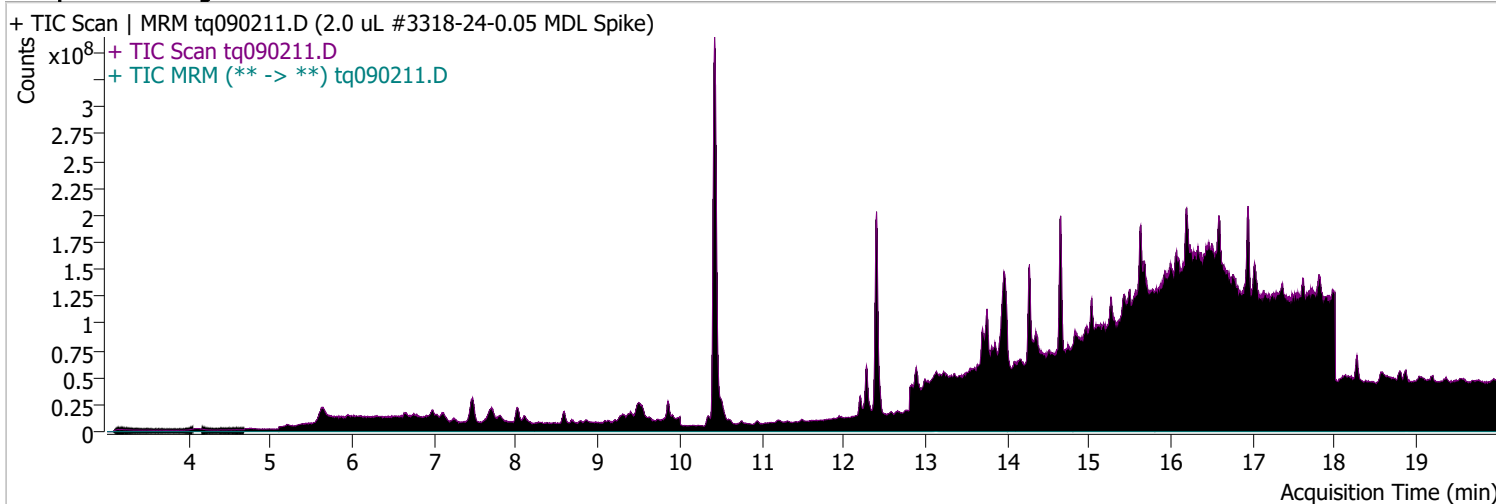
## 12:2 FTOH



# Quantitative Analysis Sample Report

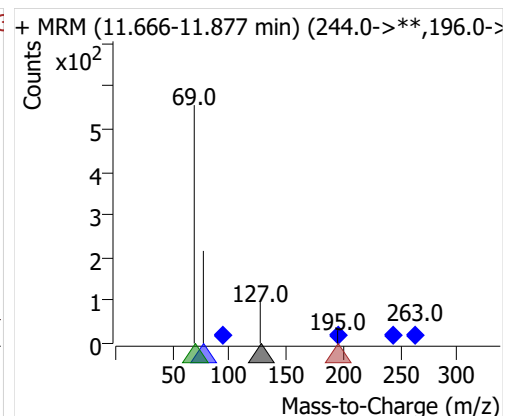
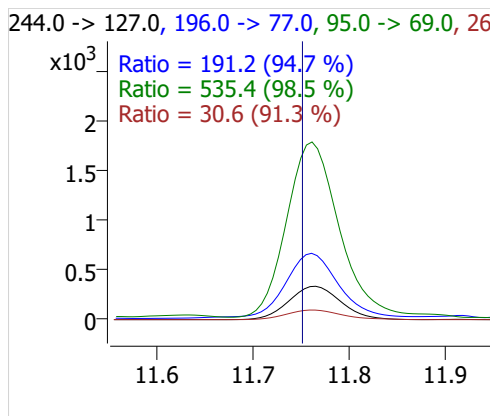
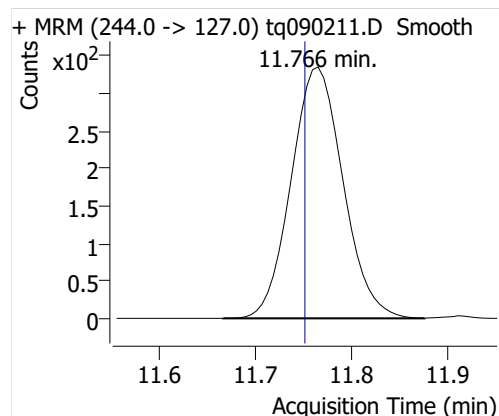
Batch Path	D:\MassHunter\GCMS\1\data\01sep22\QuantResults\mdl.batch.bin	Analyst Name	DESKTOP-R0LAL7E\analyst
Analysis Time	9/22/2022 2:17 PM	Reporter Name	DESKTOP-R0LAL7E\analyst
Report Time	9/22/2022 2:19:11 PM	Batch State	Processed
Last Calib Update	9/6/2022 9:10 AM	Quant Report Version	10.1
Quant Batch Version	10.1		
Acq. Time	9/2/2022 8:49 PM	Data File	tq090211.D
Sample Type	QC	Sample Name	2.0 uL #3318-24-0.05 MDL Spike
Dilution	1	Acq. Method	tq22m0831

## Sample Chromatogram

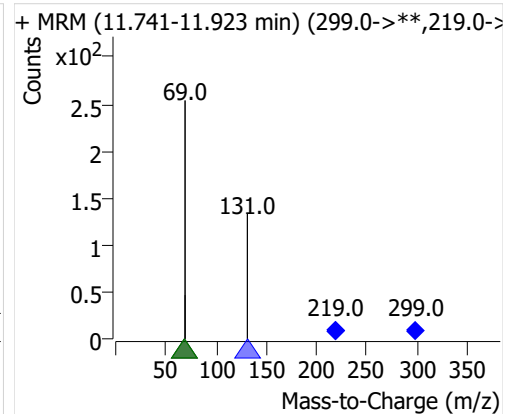
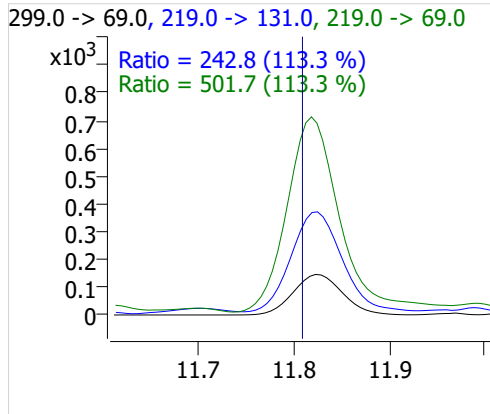
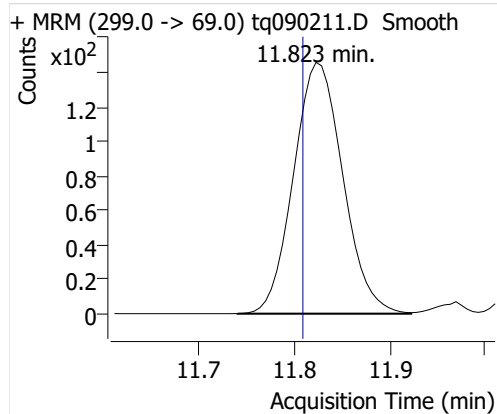


Compound	ISTD	RT	Resp.	ISTD Resp.	Resp. Ratio	Final Conc	Units
4:2 FTOH	6:2 FTOH-C13	11.766	1265	30193	0.0419	0.1007	ng
5:2sFTOH	6:2 FTOH-C13	11.823	523	30193	0.0173	0.0982	ng
7:2sFTOH	6:2 FTOH-C13	13.127	1064	30193	0.0352	0.0933	ng
6:2 FTOH	6:2 FTOH-C13	13.153	2635	30193	0.0873	0.1132	ng
8:2 FTOH-C13	6:2 FTOH-C13	14.360	9282	30193	0.3074	0.9949	ng
8:2 FTOH	6:2 FTOH-C13	14.360	706	30193	0.0234	0.1040	ng
10:2 FTOH	6:2 FTOH-C13	15.426	298	30193	0.0099	0.1315	ng
12:2 FTOH	6:2 FTOH-C13	16.407	908	30193	0.0301	0.1056	ng

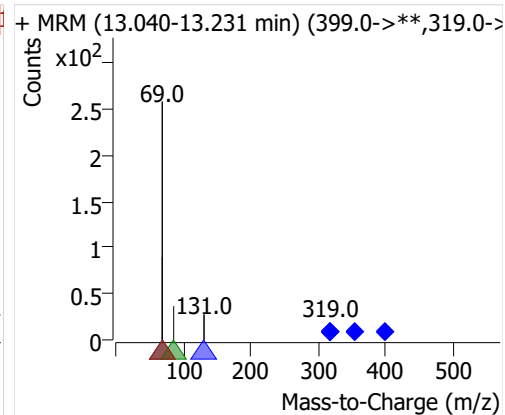
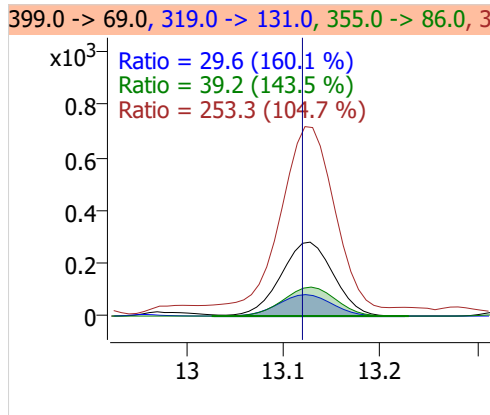
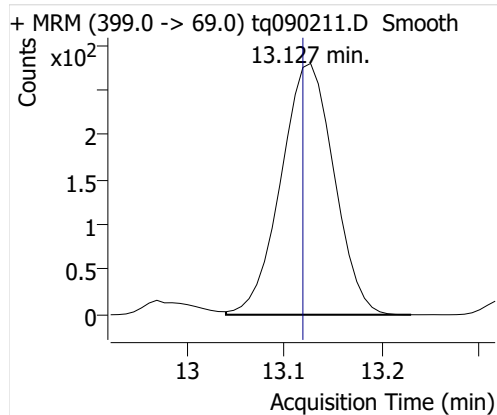
## 4:2 FTOH



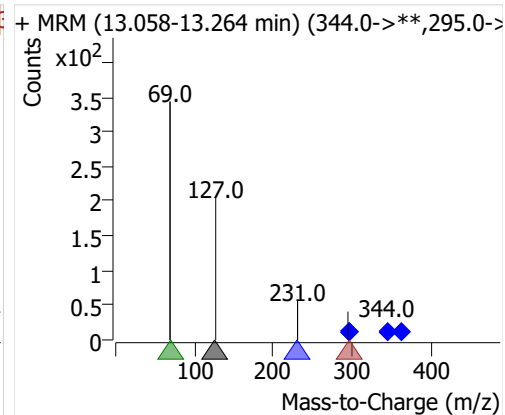
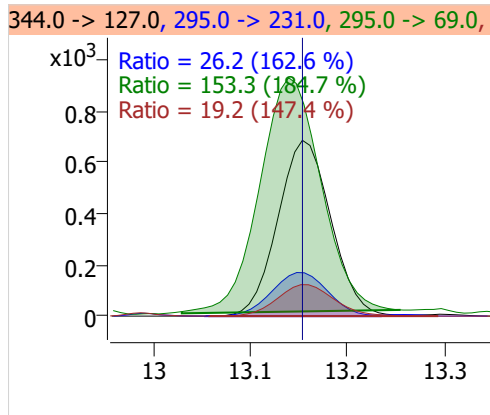
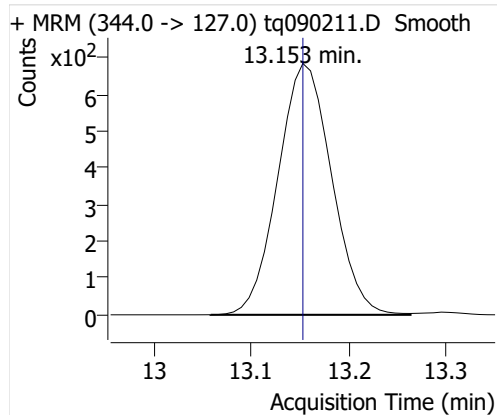
## 5:2sFTOH



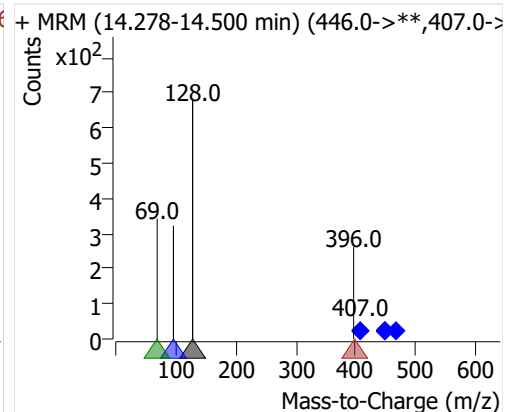
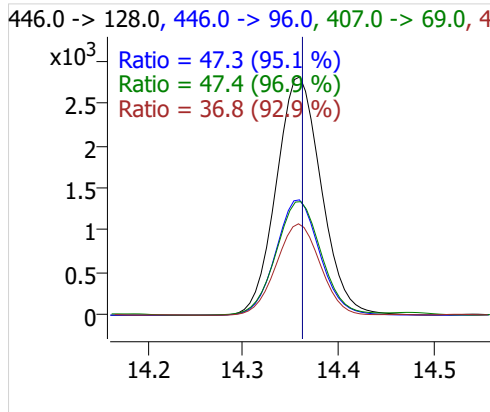
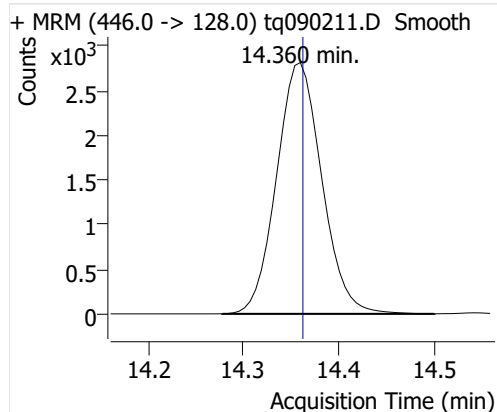
## 7:2sFTOH



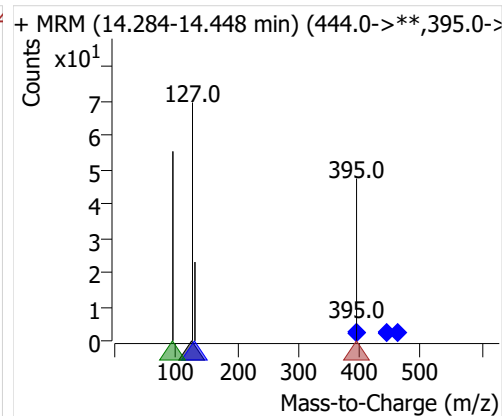
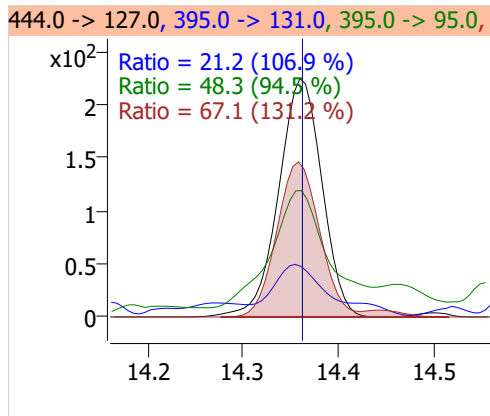
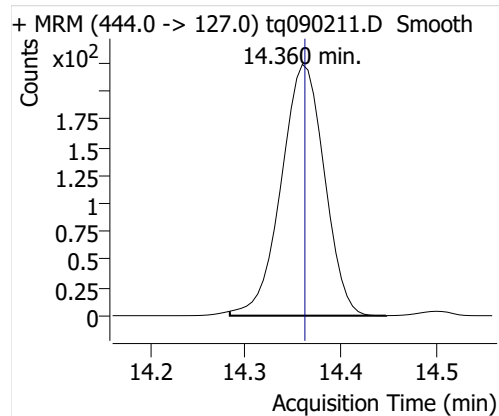
## 6:2 FTOH



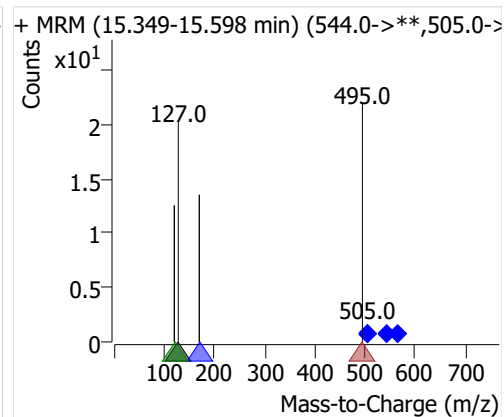
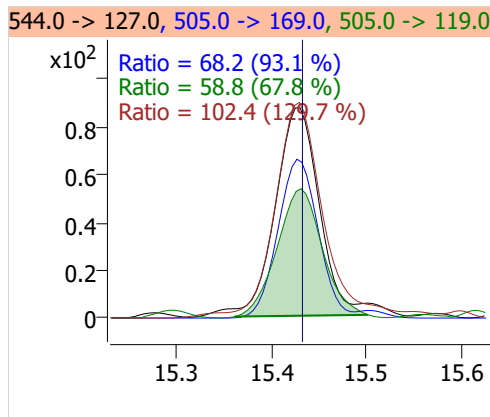
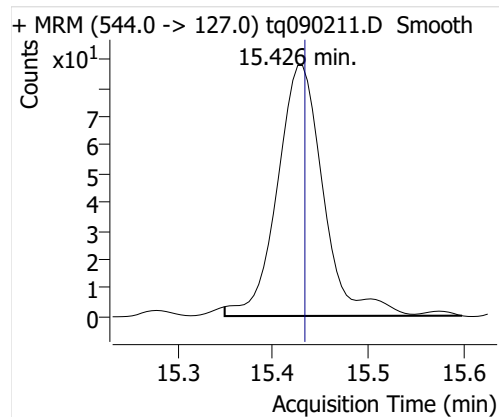
## 8:2 FTOH-C13



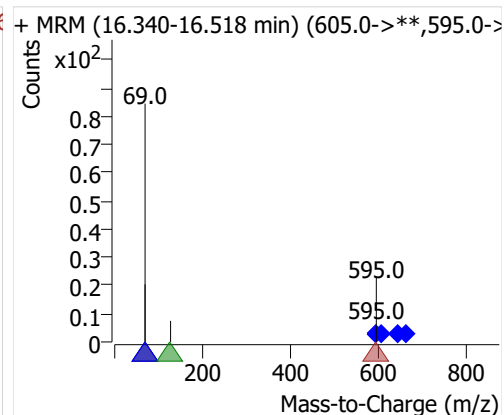
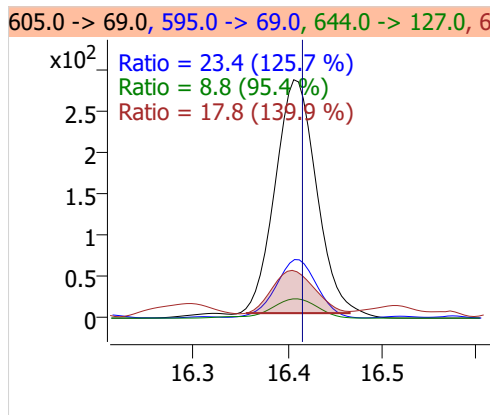
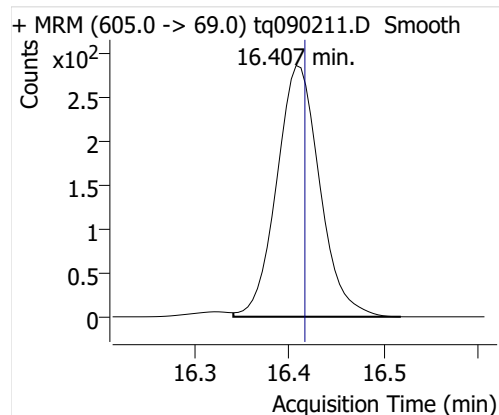
## 8:2 FTOH



## 10:2 FTOH



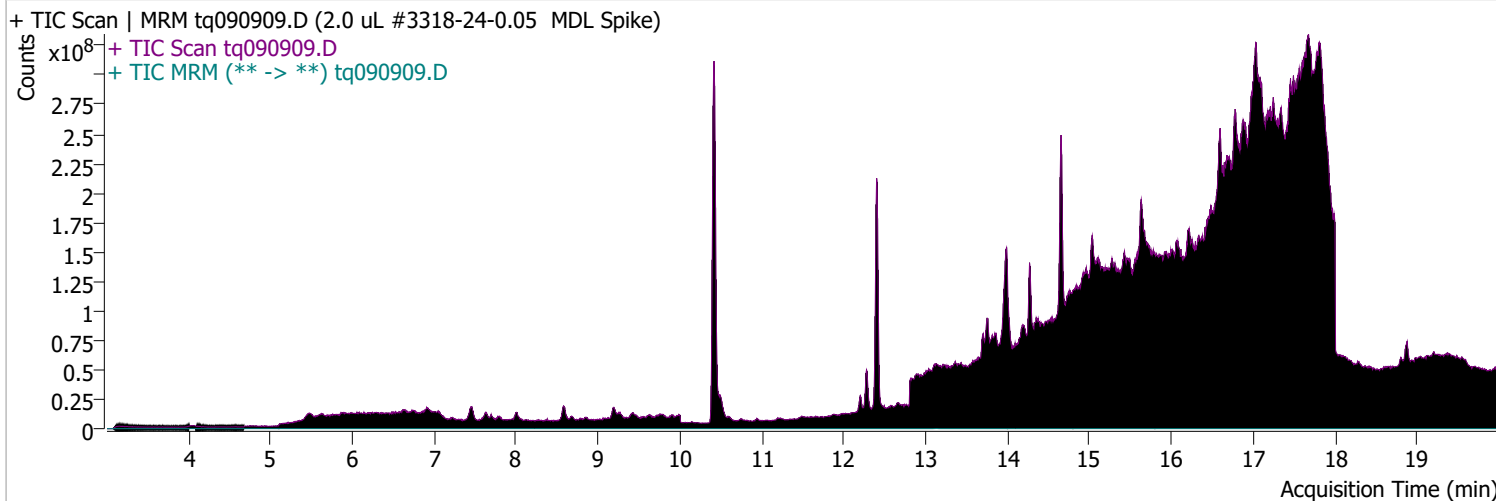
## 12:2 FTOH



# Quantitative Analysis Sample Report

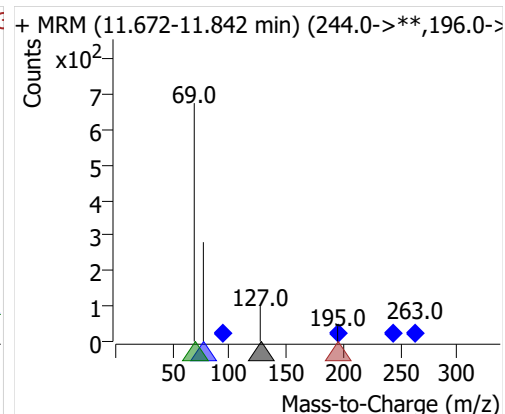
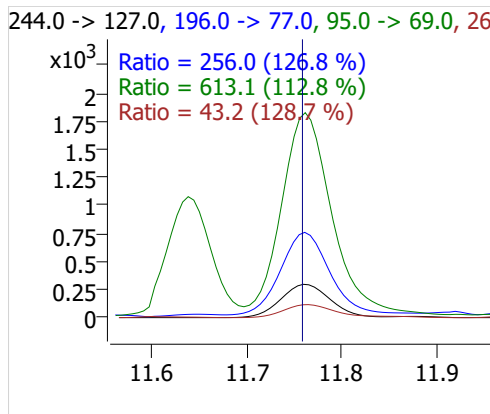
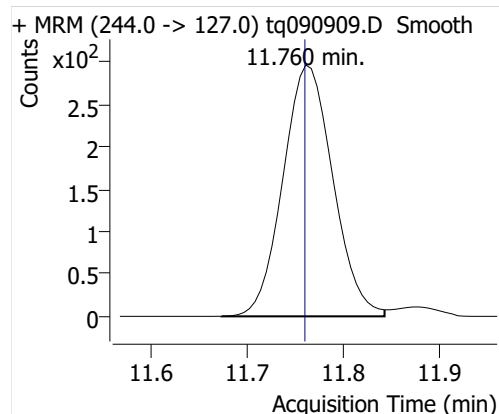
Batch Path	D:\MassHunter\GCMS\1\data\01sep22\QuantResults\mdl.batch.bin		
Analysis Time	9/22/2022 2:17 PM	Analyst Name	DESKTOP-R0LAL7E\analyst
Report Time	9/22/2022 2:19:12 PM	Reporter Name	DESKTOP-R0LAL7E\analyst
Last Calib Update	9/6/2022 9:10 AM	Batch State	Processed
Quant Batch Version	10.1	Quant Report Version	10.1
Acq. Time	9/9/2022 4:09 PM	Data File	tq090909.D
Sample Type	QC	Sample Name	2.0 uL #3318-24-0.05 MDL Spike
Dilution	1	Acq. Method	tq22m0831

## Sample Chromatogram



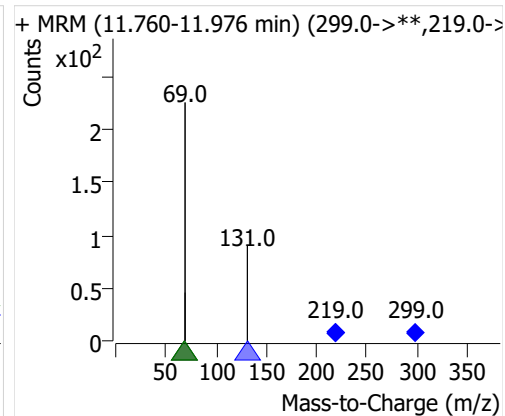
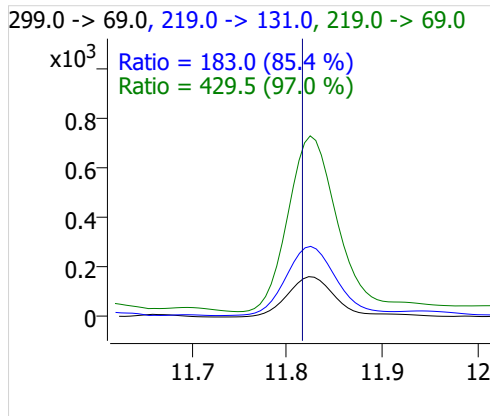
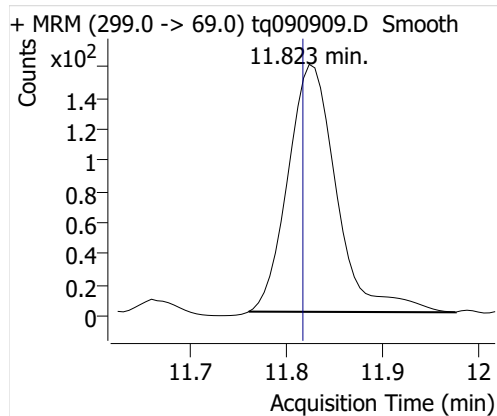
Compound	ISTD	RT	Resp.	ISTD Resp.	Resp. Ratio	Final Conc	Units
4:2 FTOH	6:2 FTOH-C13	11.760	1072	26761	0.0401	0.0963	ng
5:2sFTOH	6:2 FTOH-C13	11.823	560	26761	0.0209	0.1187	ng
7:2sFTOH	6:2 FTOH-C13	13.127	1030	26761	0.0385	0.1019	ng
6:2 FTOH	6:2 FTOH-C13	13.161	2026	26761	0.0757	0.0982	ng
8:2 FTOH-C13	6:2 FTOH-C13	14.366	7294	26761	0.2726	0.8821	ng
8:2 FTOH	6:2 FTOH-C13	14.360	632	26761	0.0236	0.1051	ng
10:2 FTOH	6:2 FTOH-C13	15.436	163	26761	0.0061	0.0812	ng
12:2 FTOH	6:2 FTOH-C13	16.416	568	26761	0.0212	0.0745	ng

## 4:2 FTOH

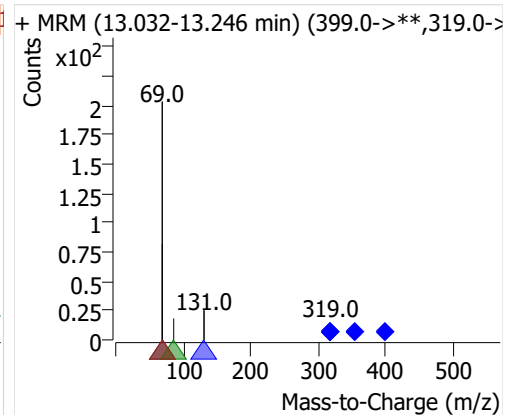
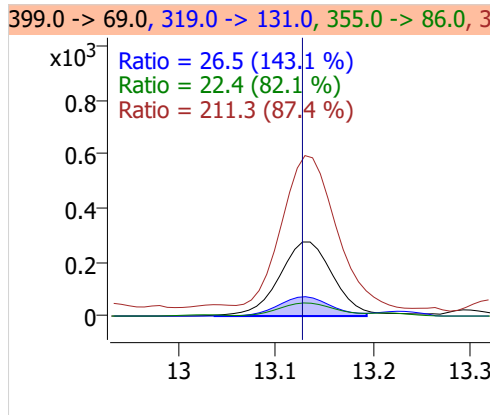
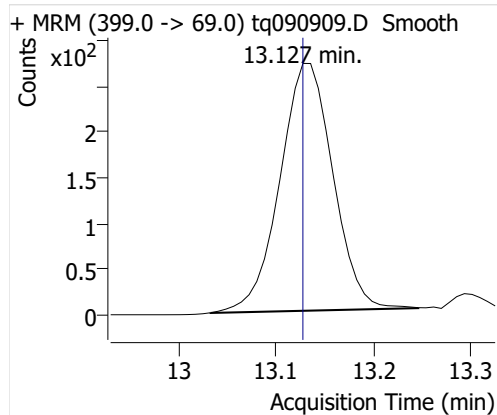




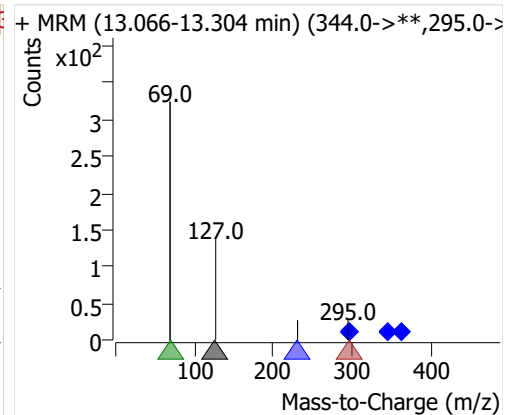
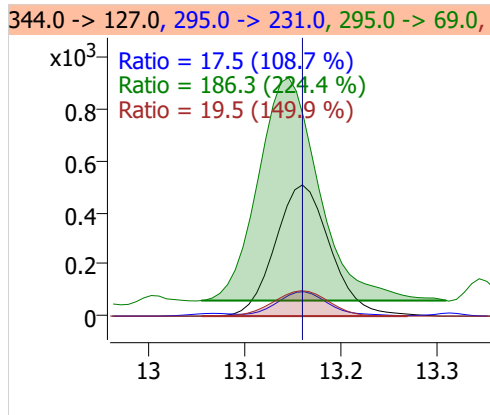
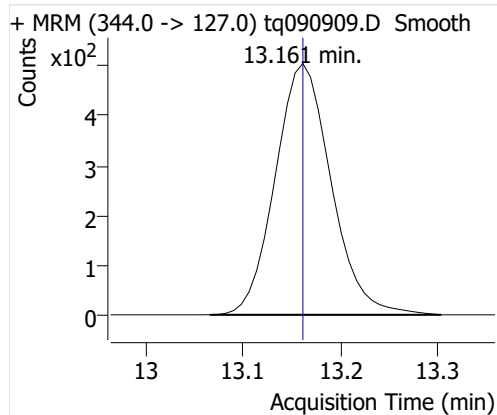
## 5:2sFTOH



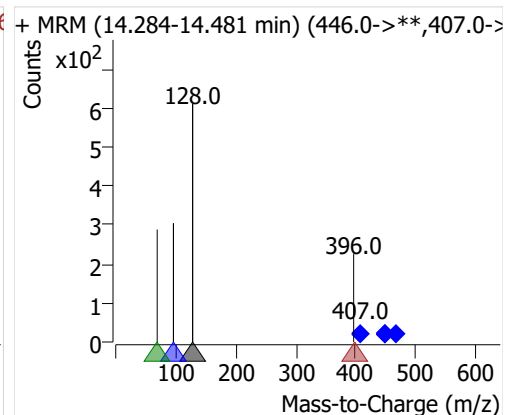
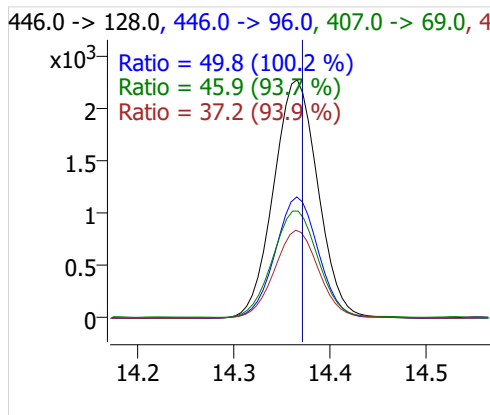
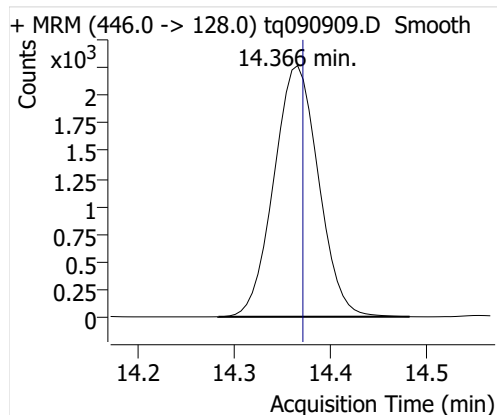
## 7:2sFTOH



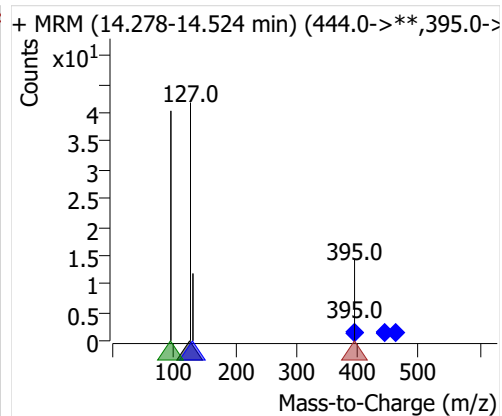
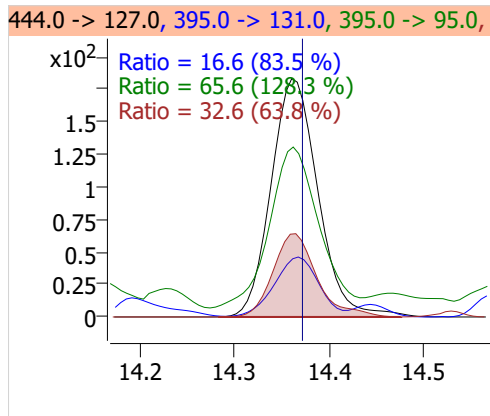
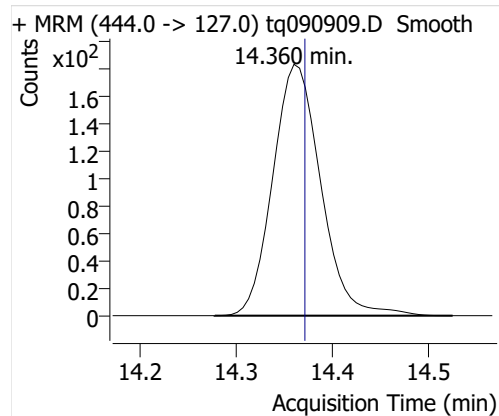
## 6:2 FTOH



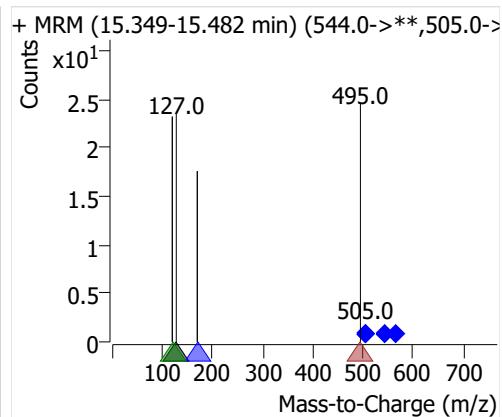
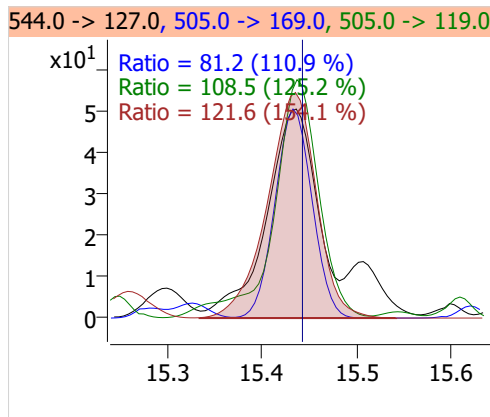
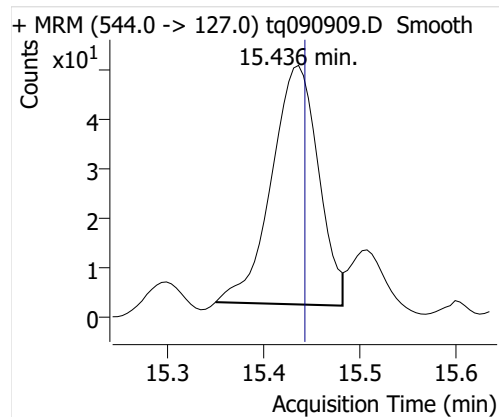
## 8:2 FTOH-C13



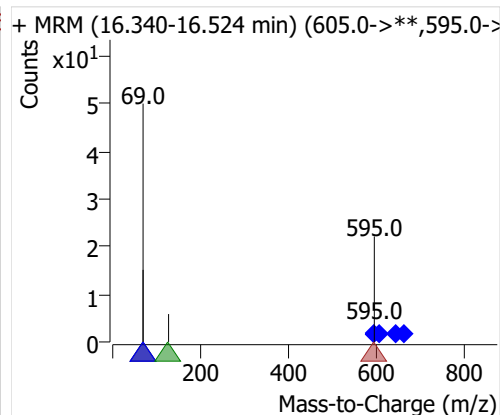
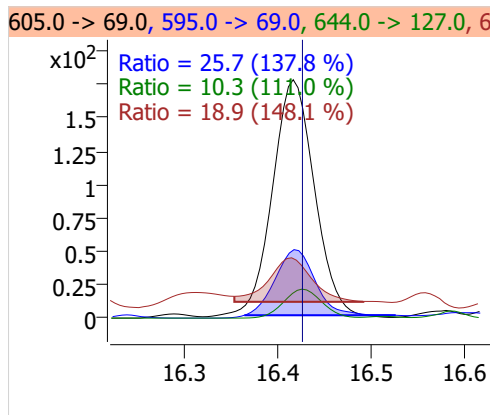
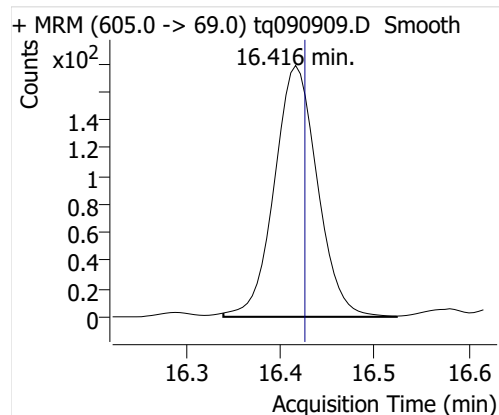
## 8:2 FTOH



## 10:2 FTOH



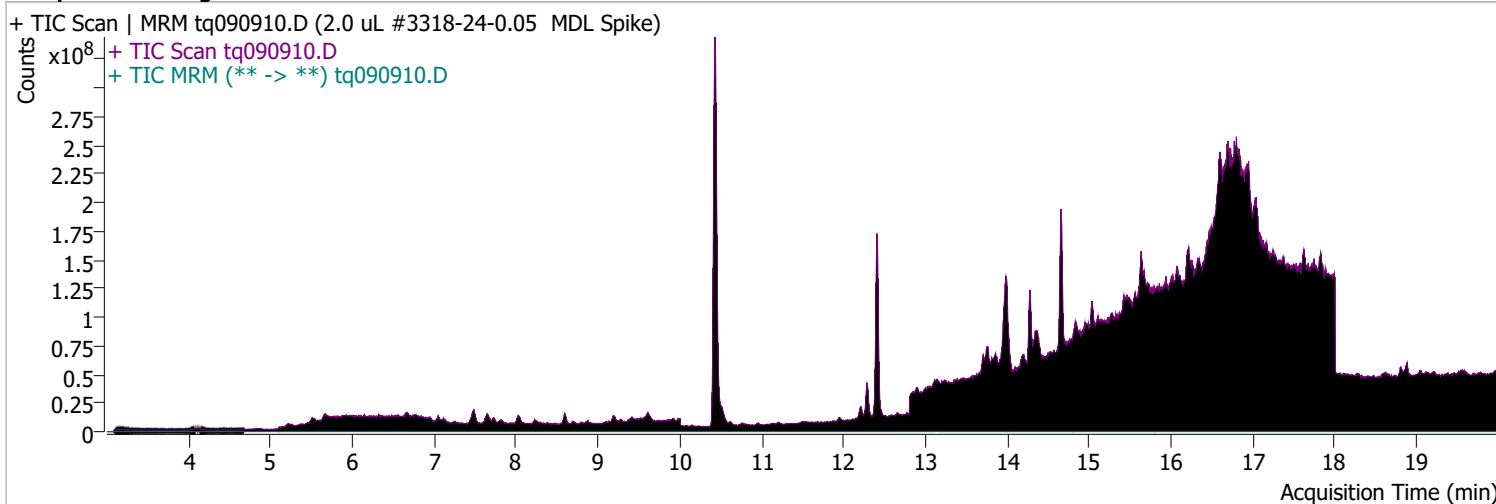
## 12:2 FTOH



# Quantitative Analysis Sample Report

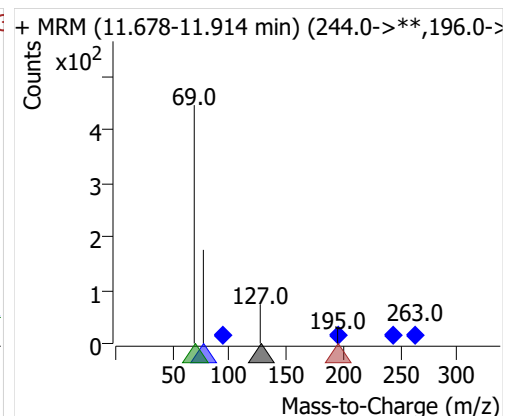
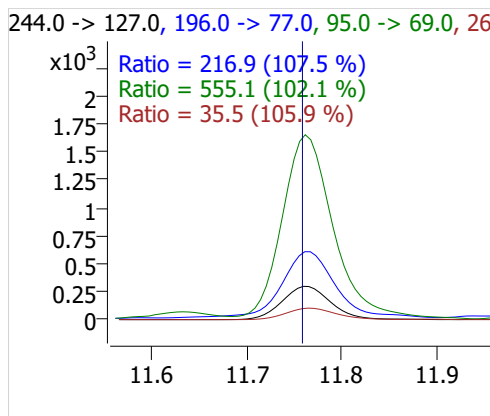
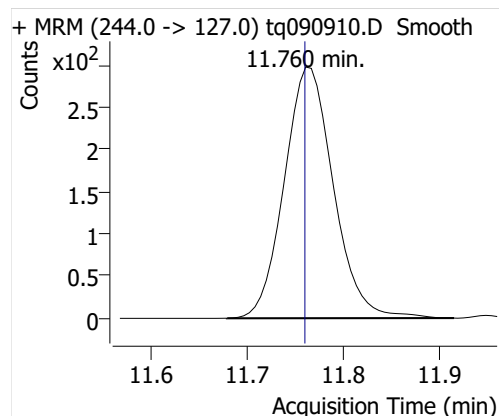
**Batch Path** D:\MassHunter\GCMS\1\data\01sep22\QuantResults\mdl.batch.bin  
**Analysis Time** 9/22/2022 2:17 PM **Analyst Name** DESKTOP-R0LAL7E\analyst  
**Report Time** 9/22/2022 2:19:12 PM **Reporter Name** DESKTOP-R0LAL7E\analyst  
**Last Calib Update** 9/6/2022 9:10 AM **Batch State** Processed  
**Quant Batch Version** 10.1 **Quant Report Version** 10.1  
**Acq. Time** 9/9/2022 4:50 PM **Data File** tq090910.D  
**Sample Type** QC **Sample Name** 2.0 uL #3318-24-0.05 MDL Spike  
**Dilution** 1 **Acq. Method** tq22m0831

## Sample Chromatogram

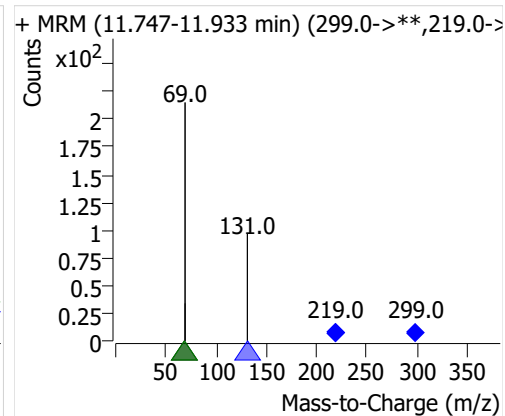
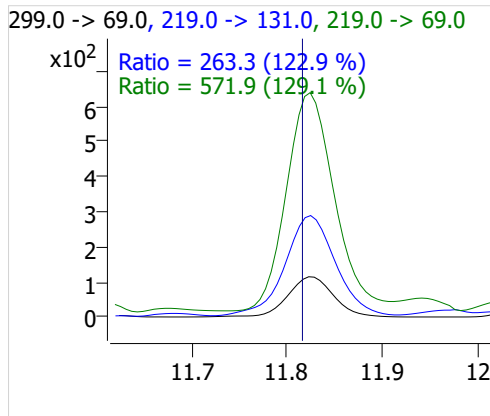
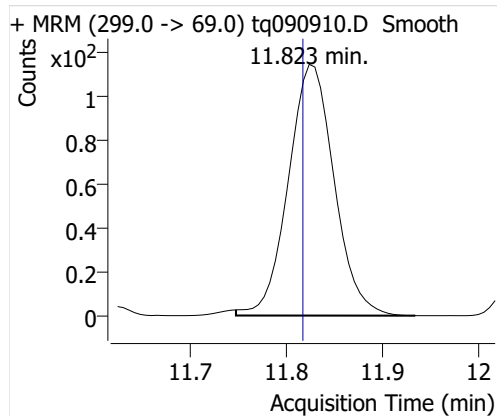


Compound	ISTD	RT	Resp.	ISTD Resp.	Resp. Ratio	Final Conc	Units
4:2 FTOH	6:2 FTOH-C13	11.760	1057	25908	0.0408	0.0981	ng
5:2sFTOH	6:2 FTOH-C13	11.823	379	25908	0.0146	0.0830	ng
7:2sFTOH	6:2 FTOH-C13	13.135	1149	25908	0.0443	0.1174	ng
6:2 FTOH	6:2 FTOH-C13	13.161	2508	25908	0.0968	0.1256	ng
8:2 FTOH-C13	6:2 FTOH-C13	14.365	7552	25908	0.2915	0.9433	ng
8:2 FTOH	6:2 FTOH-C13	14.366	593	25908	0.0229	0.1018	ng
10:2 FTOH	6:2 FTOH-C13	15.431	222	25908	0.0086	0.1139	ng
12:2 FTOH	6:2 FTOH-C13	16.416	771	25908	0.0297	0.1044	ng

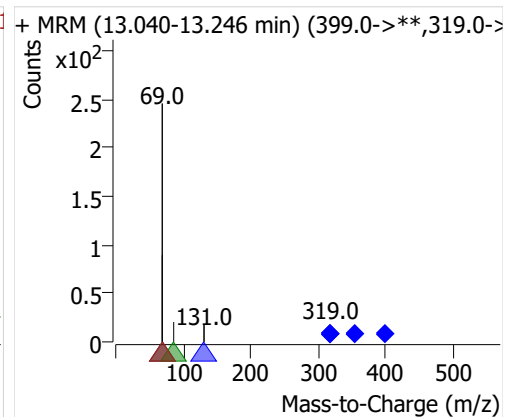
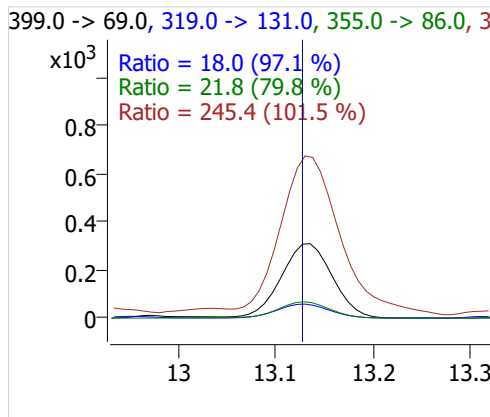
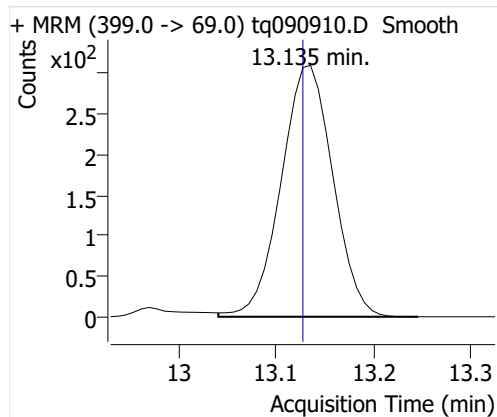
## 4:2 FTOH



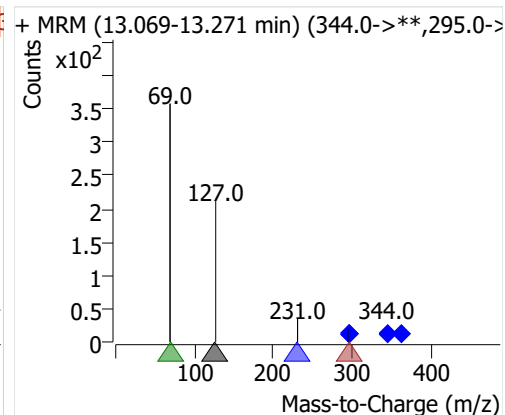
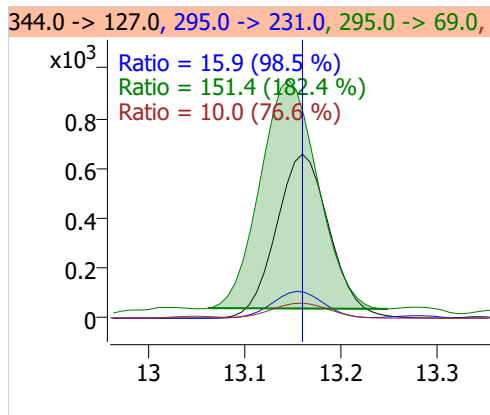
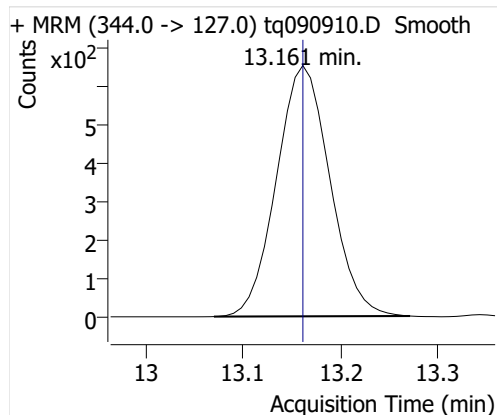
## 5:2sFTOH



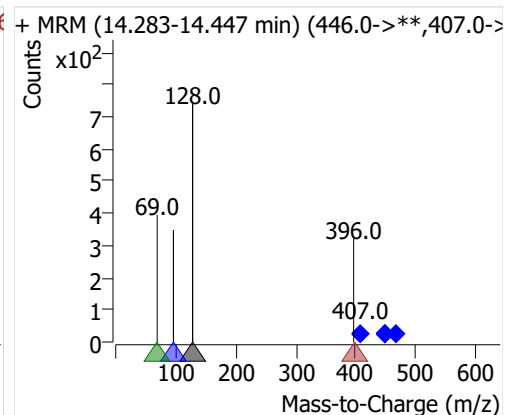
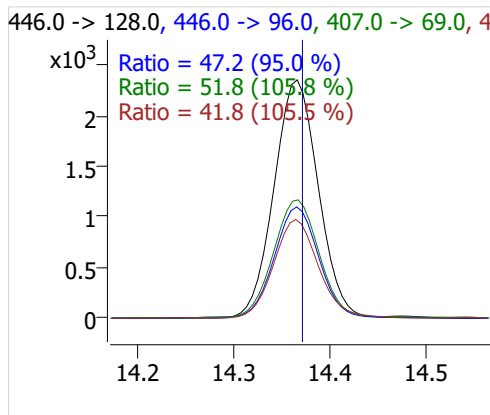
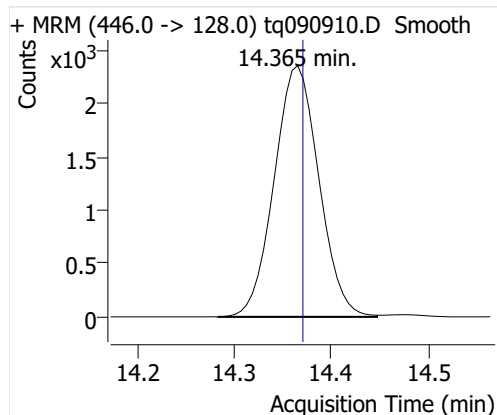
## 7:2sFTOH



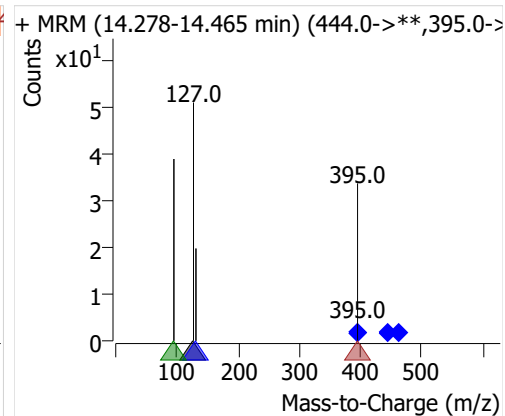
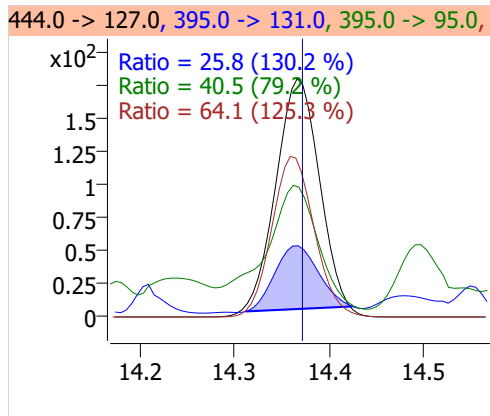
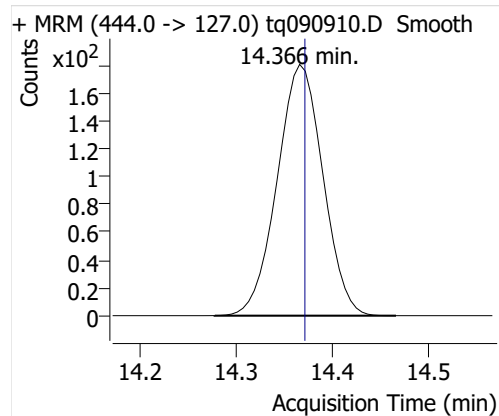
## 6:2 FTOH



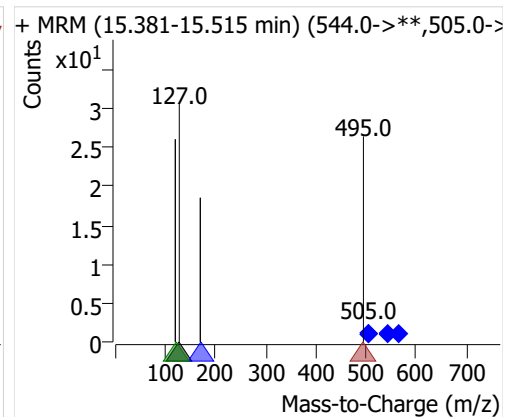
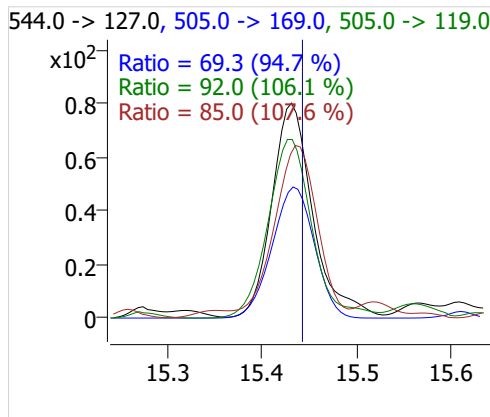
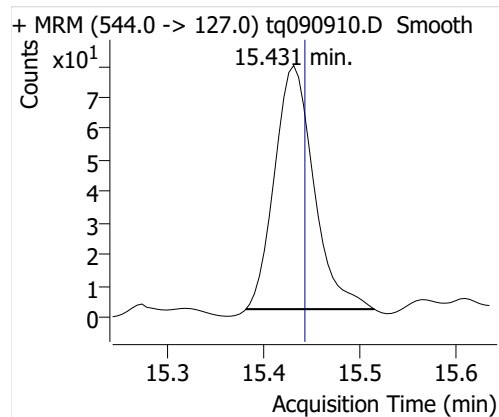
## 8:2 FTOH-C13



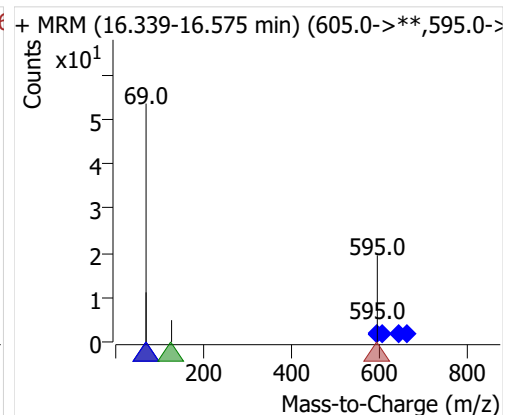
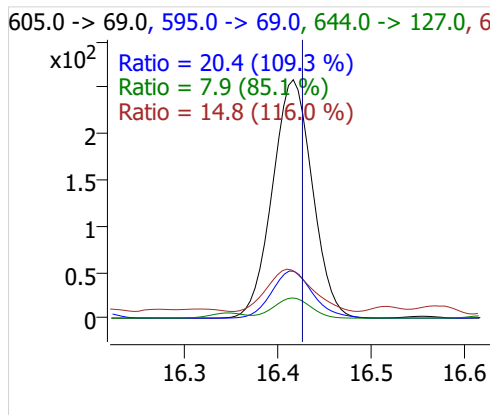
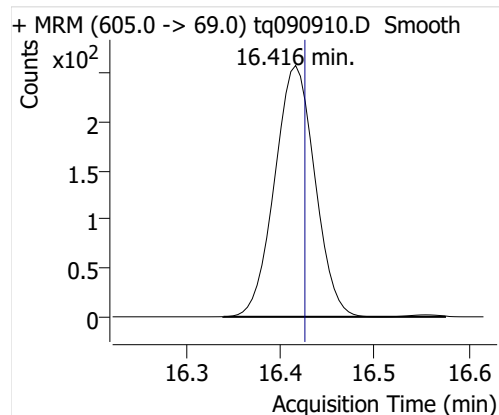
## 8:2 FTOH



## 10:2 FTOH



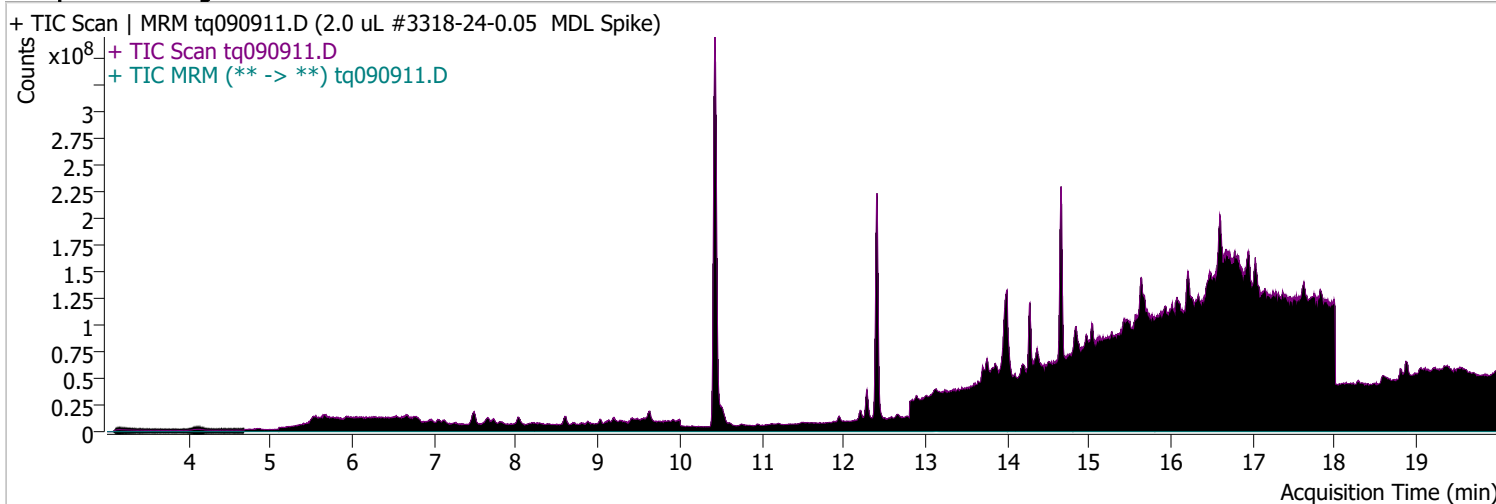
## 12:2 FTOH



# Quantitative Analysis Sample Report

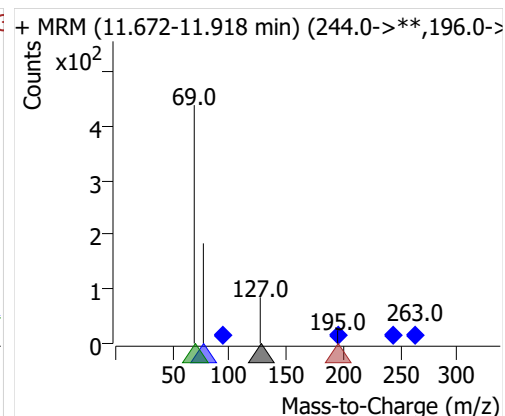
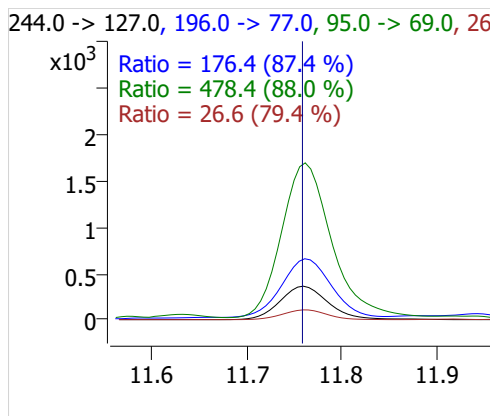
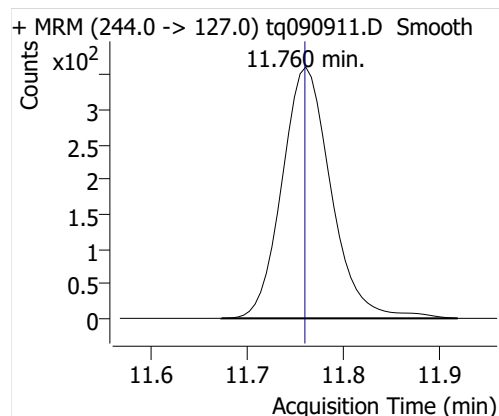
Batch Path	D:\MassHunter\GCMS\1\data\01sep22\QuantResults\mdl.batch.bin		
Analysis Time	9/22/2022 2:17 PM	Analyst Name	DESKTOP-R0LAL7E\analyst
Report Time	9/22/2022 2:19:13 PM	Reporter Name	DESKTOP-R0LAL7E\analyst
Last Calib Update	9/6/2022 9:10 AM	Batch State	Processed
Quant Batch Version	10.1	Quant Report Version	10.1
Acq. Time	9/9/2022 5:31 PM	Data File	tq090911.D
Sample Type	QC	Sample Name	2.0 uL #3318-24-0.05 MDL Spike
Dilution	1	Acq. Method	tq22m0831

## Sample Chromatogram

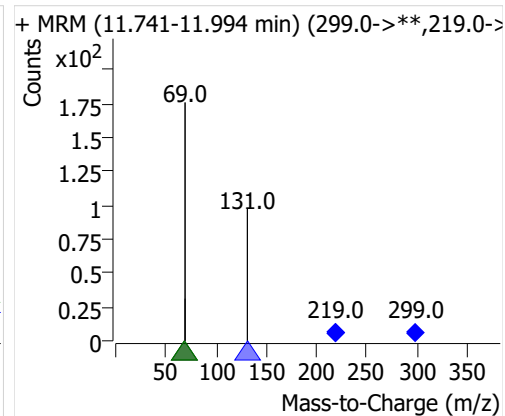
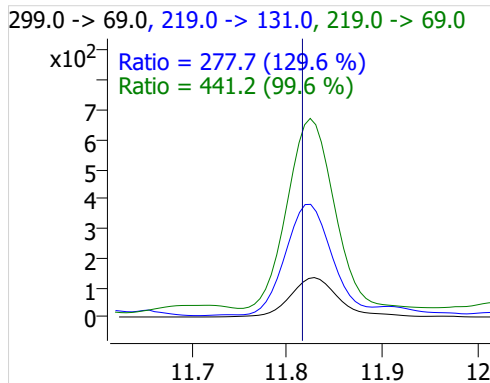
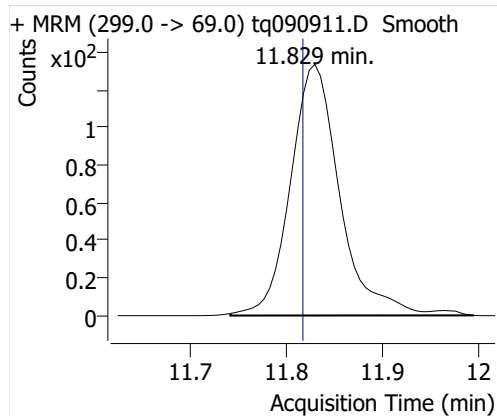


Compound	ISTD	RT	Resp.	ISTD Resp.	Resp. Ratio	Final Conc	Units
4:2 FTOH	6:2 FTOH-C13	11.760	1285	26491	0.0485	0.1166	ng
5:2sFTOH	6:2 FTOH-C13	11.829	477	26491	0.0180	0.1021	ng
7:2sFTOH	6:2 FTOH-C13	13.127	950	26491	0.0359	0.0949	ng
6:2 FTOH	6:2 FTOH-C13	13.161	1881	26491	0.0710	0.0921	ng
8:2 FTOH-C13	6:2 FTOH-C13	14.360	8119	26491	0.3065	0.9918	ng
8:2 FTOH	6:2 FTOH-C13	14.360	721	26491	0.0272	0.1210	ng
10:2 FTOH	6:2 FTOH-C13	15.431	245	26491	0.0093	0.1231	ng
12:2 FTOH	6:2 FTOH-C13	16.412	840	26491	0.0317	0.1114	ng

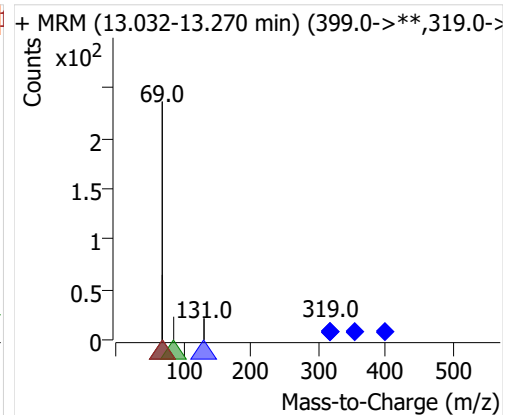
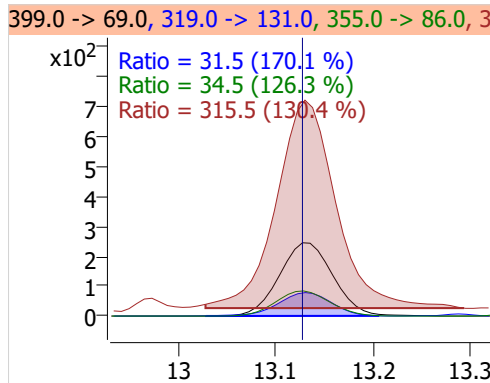
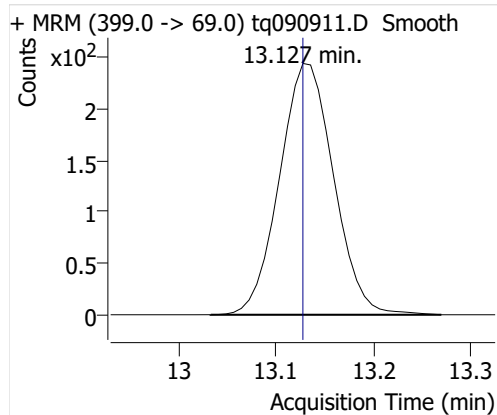
## 4:2 FTOH



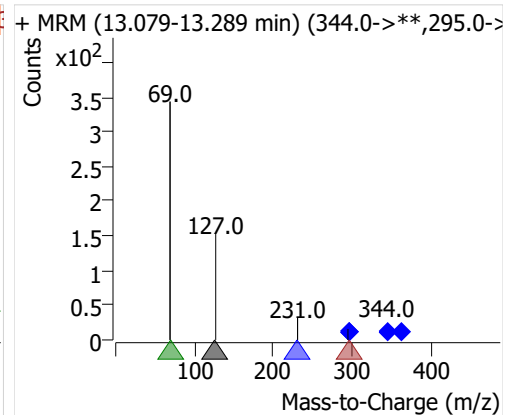
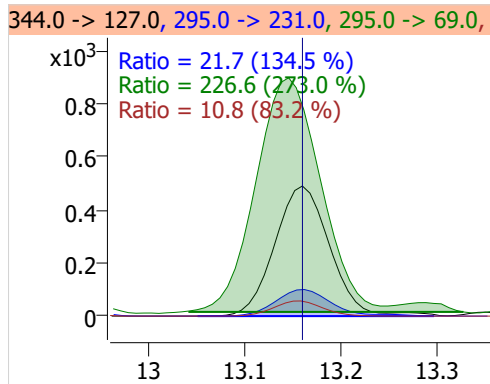
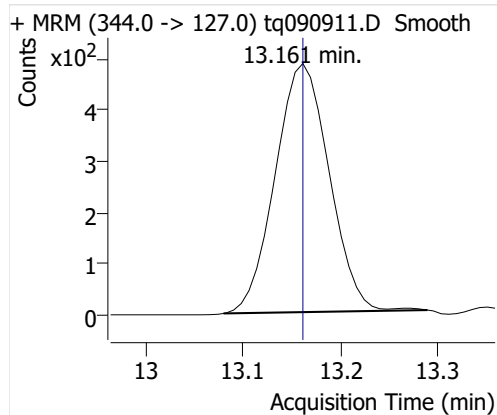
## 5:2sFTOH



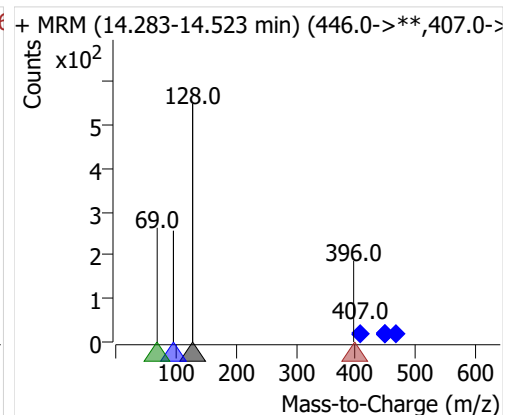
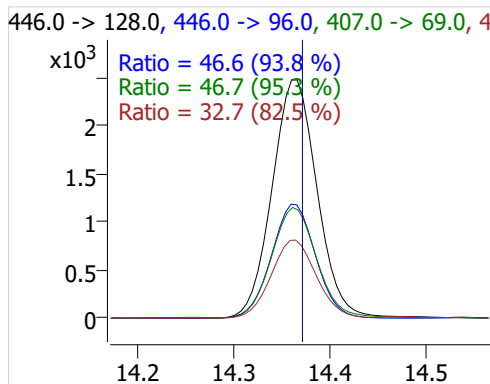
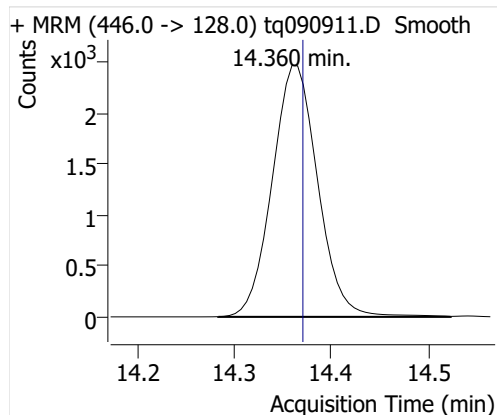
## 7:2sFTOH



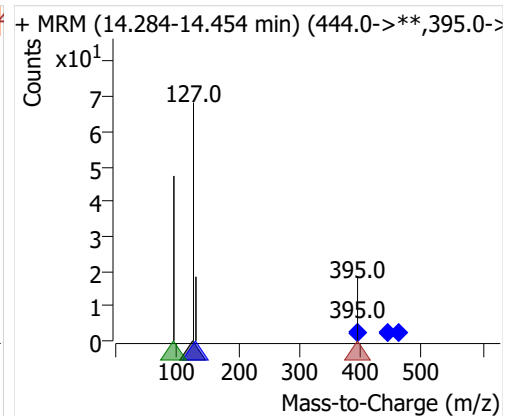
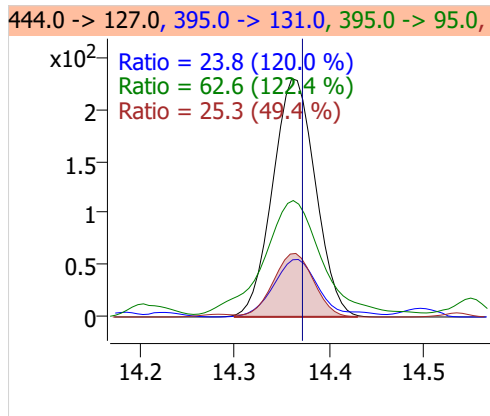
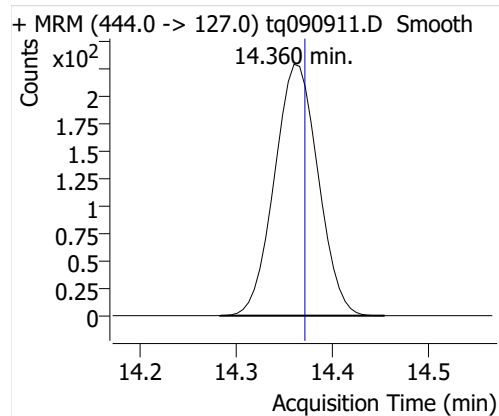
## 6:2 FTOH



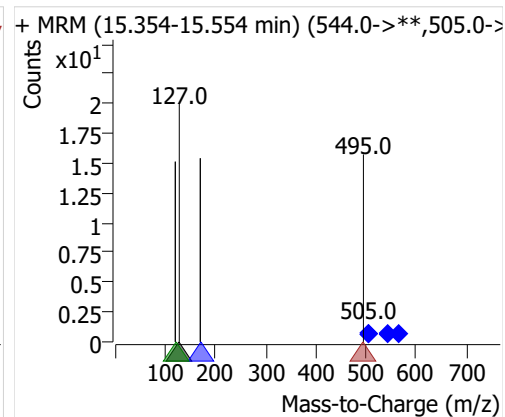
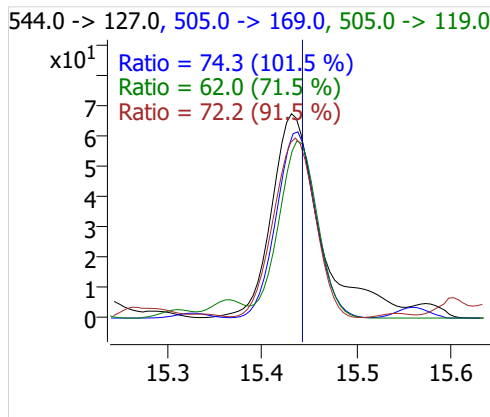
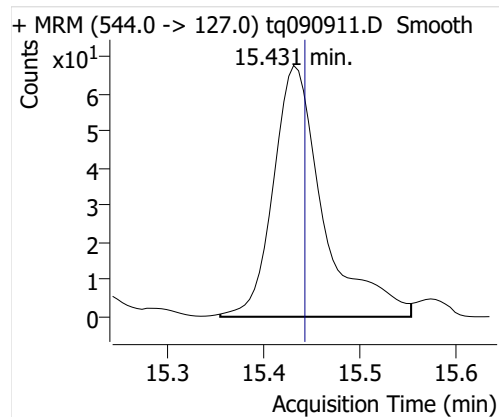
## 8:2 FTOH-C13



## 8:2 FTOH



## 10:2 FTOH



## 12:2 FTOH

